

Lorain County Child and Family Health Services -- Community Health Indicators



Public Services Institute /
Joint Center for Policy Research
Lorain County Community College
Jeffrey K. Lange, Ph.D.
June, 2008



LORAIN CITY
HEALTH DEPARTMENT

Changes Since 2006 Report

- More current data (& trends where available)
- More indicators
- Selected comparisons with Cuyahoga County and State of Ohio as a whole
- Comparisons to Healthy People 2010 Goals
- Single-year versus moving-average

GLOBAL AND NATIONAL FERTILITY AND MORTALITY

- In 1960, the U.S. crude birth rate was 23.7 per 1,000 in the total population. At that time, the crude death rate was 9.5 per 1,000. This yielded a net natural increase of 14.2 per thousand or 1.4% annual growth (excluding migration). By 2000, the crude birth rate had dropped to 14.3 per 1,000 and the crude death rate to 8.5 per 1,000, yielding a net annual natural increase of 0.6%.
- In Ohio, the 2005 crude birth rate was 13.0 per 1,000 and the fertility rate (considering women of childbearing age only) was 63.2 per 1,000 versus 66.7 per 1,000 in the overall U.S. population.
- In 1960, U.S. births numbered 4.258 million, with 111,000 infant deaths, a resulting infant mortality rate of 26.0 per 1,000. By 2006, an almost equal number of births occurred – 4.269 million. Infant deaths, however, were far fewer than in 1960 – about 28,000, associated with an infant mortality rate of 6.6 per 1,000.

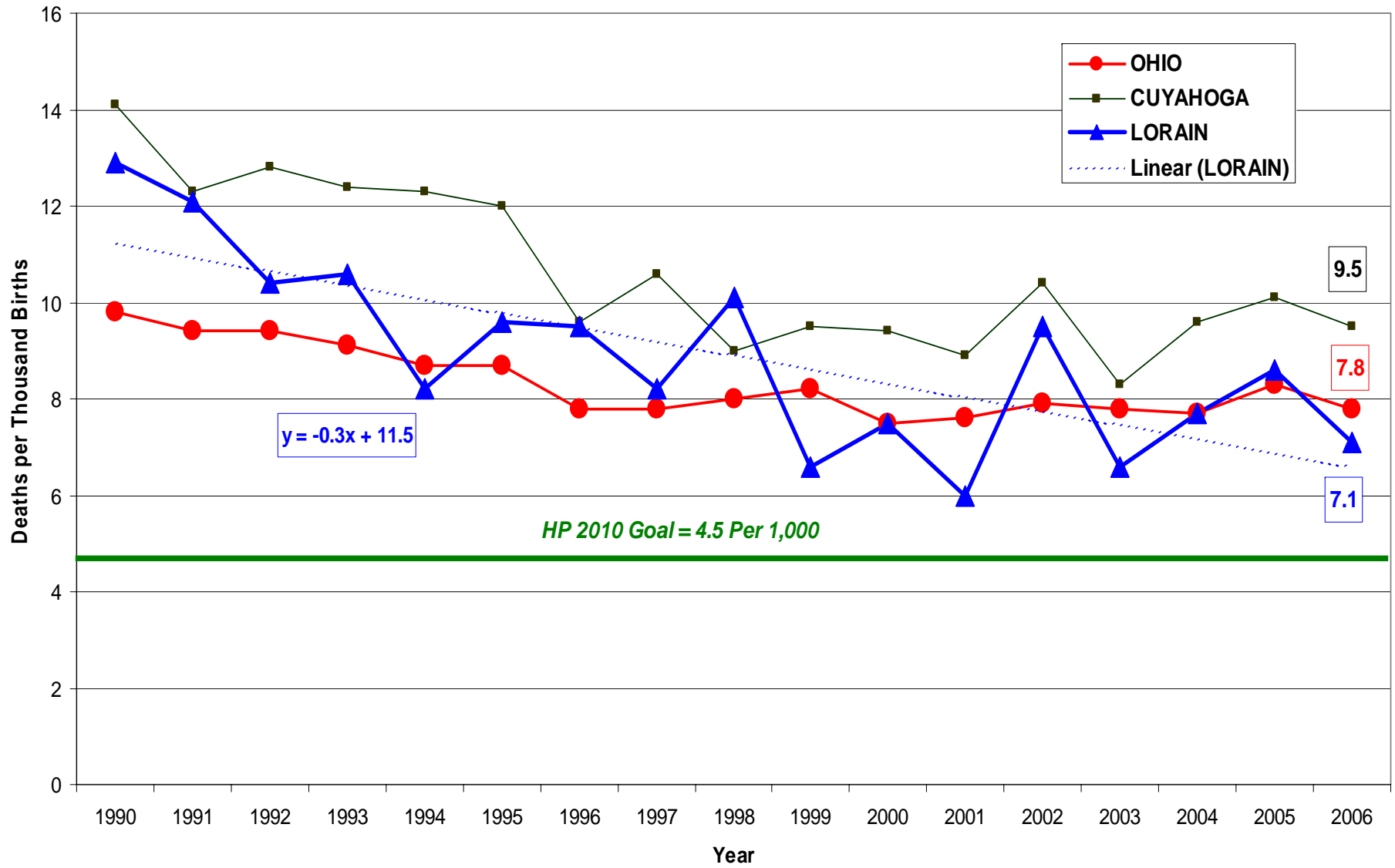
INFANT MORTALITY #1

- Worldwide, the highest infant mortality rate was registered in Afghanistan, at 163 per 1,000. This was followed by Cambodia at 71 per 1,000. At the other end of the spectrum, Japan's rate was 3.3 per 1,000 while that of France, Germany, and Spain hovered around 4.5 per 1,000.
- Ohio's infant mortality rate – 7.8 per 1,000 -- exceeded that of the U.S. generally (6.6 per 1,000), while Lorain County most recently showed a rate of 7.1 per 1,000. All these remained above the Healthy People 2010 goal of 4.5 per 1,000.
- Following a persistent, national pattern, the 2006 infant mortality rate in Lorain County was 2.9 times higher than that for the County's white population. The HP2010 goal is to eliminate such a differential. The black infant mortality rate for the period of 2004 to 2006 averaged 15.7 per 1,000 while that for Lorain County's Hispanic residents was 5.6 per 1,000.

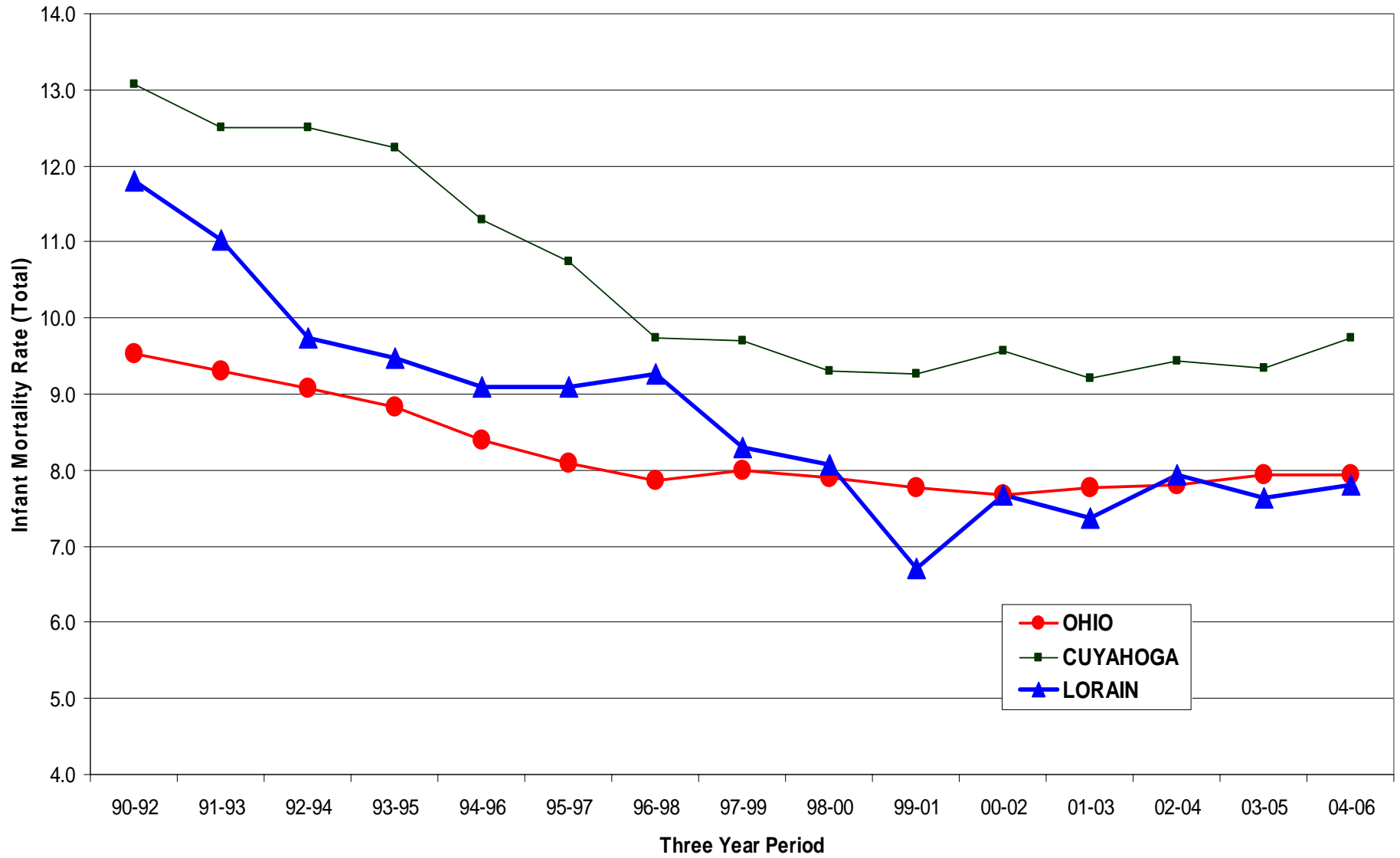
INFANT MORTALITY #2

- The more narrowly limited measures of neonatal and perinatal mortality rates showed Lorain County as exceeding respective HP2010 targets.
- The ratio of black to white perinatal mortality rates rested at 2.0 in Lorain County, unacceptably high but lower than the overall black-to-white infant-mortality- rate ratio of 2.9 to 1.
- Recently recorded at 1.9 per 1,000, Lorain County's postneonatal mortality rate appeared to be moving favorably toward the HP2010 goal of 1.2 per 1,000.
- This report includes an initial reading on "Neural Tube Defects", shown in Ohio Department of Health at a level of zero for 2006

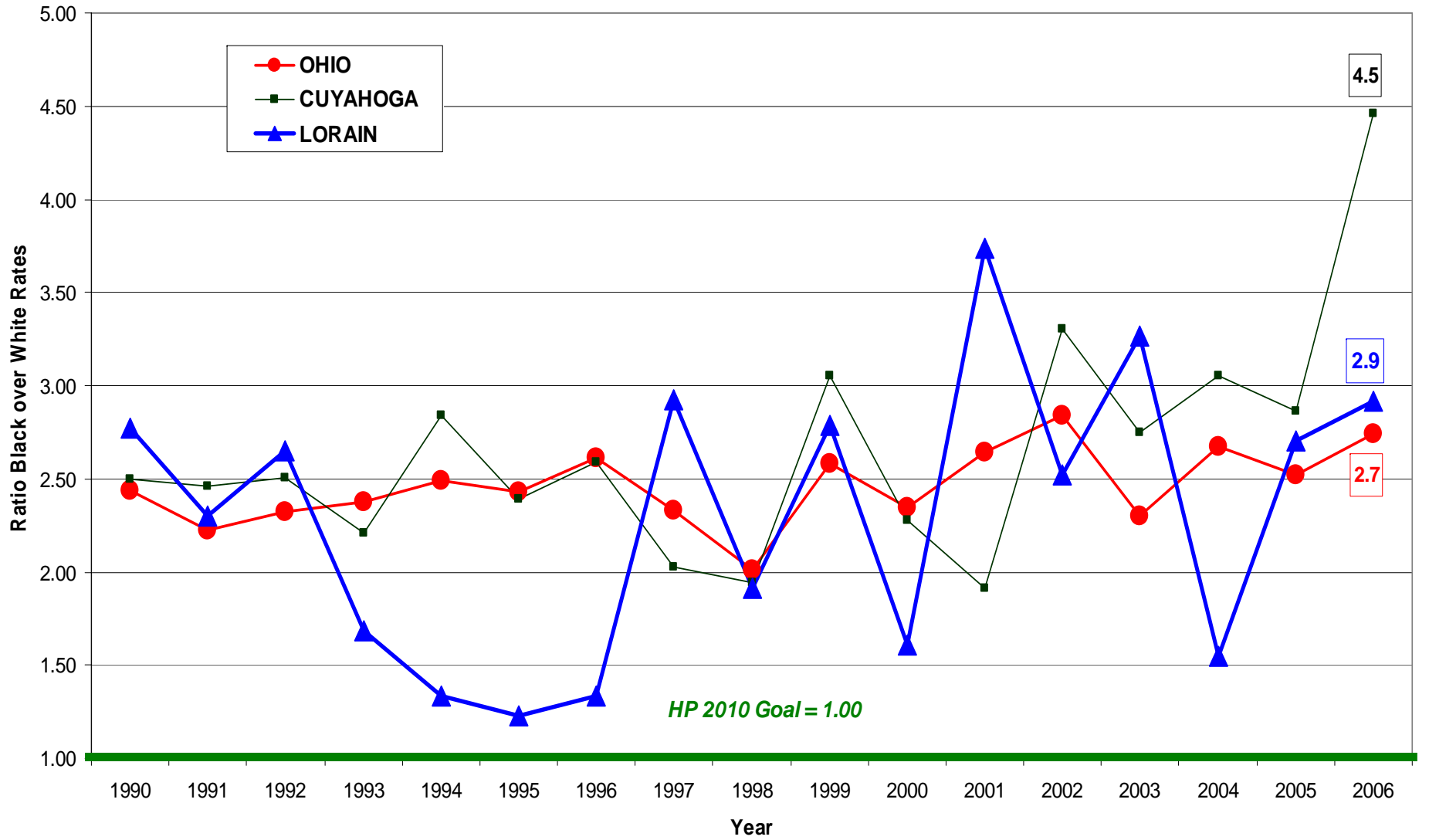
Infant Mortality Rate



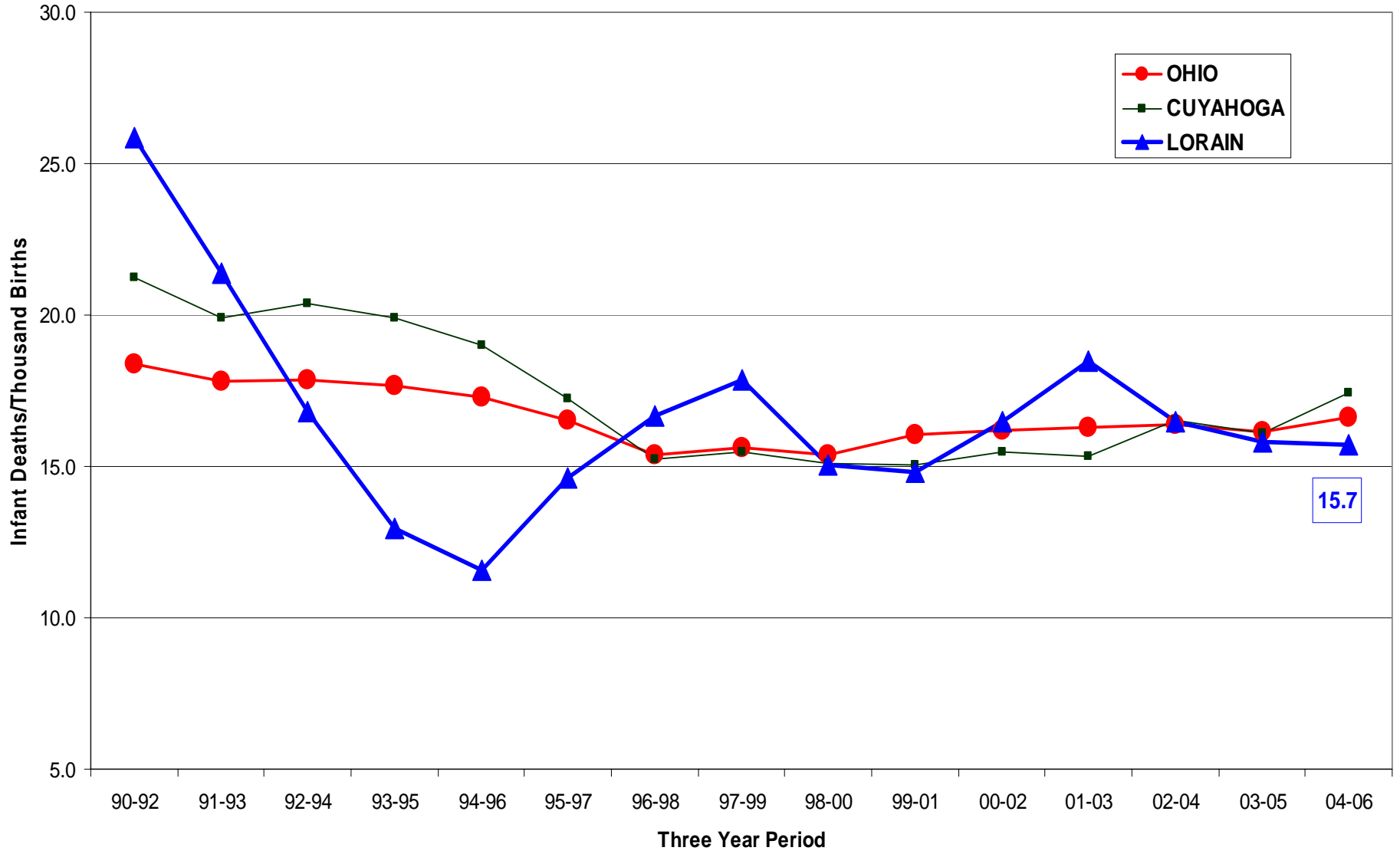
Moving Average Infant Mortality Rate



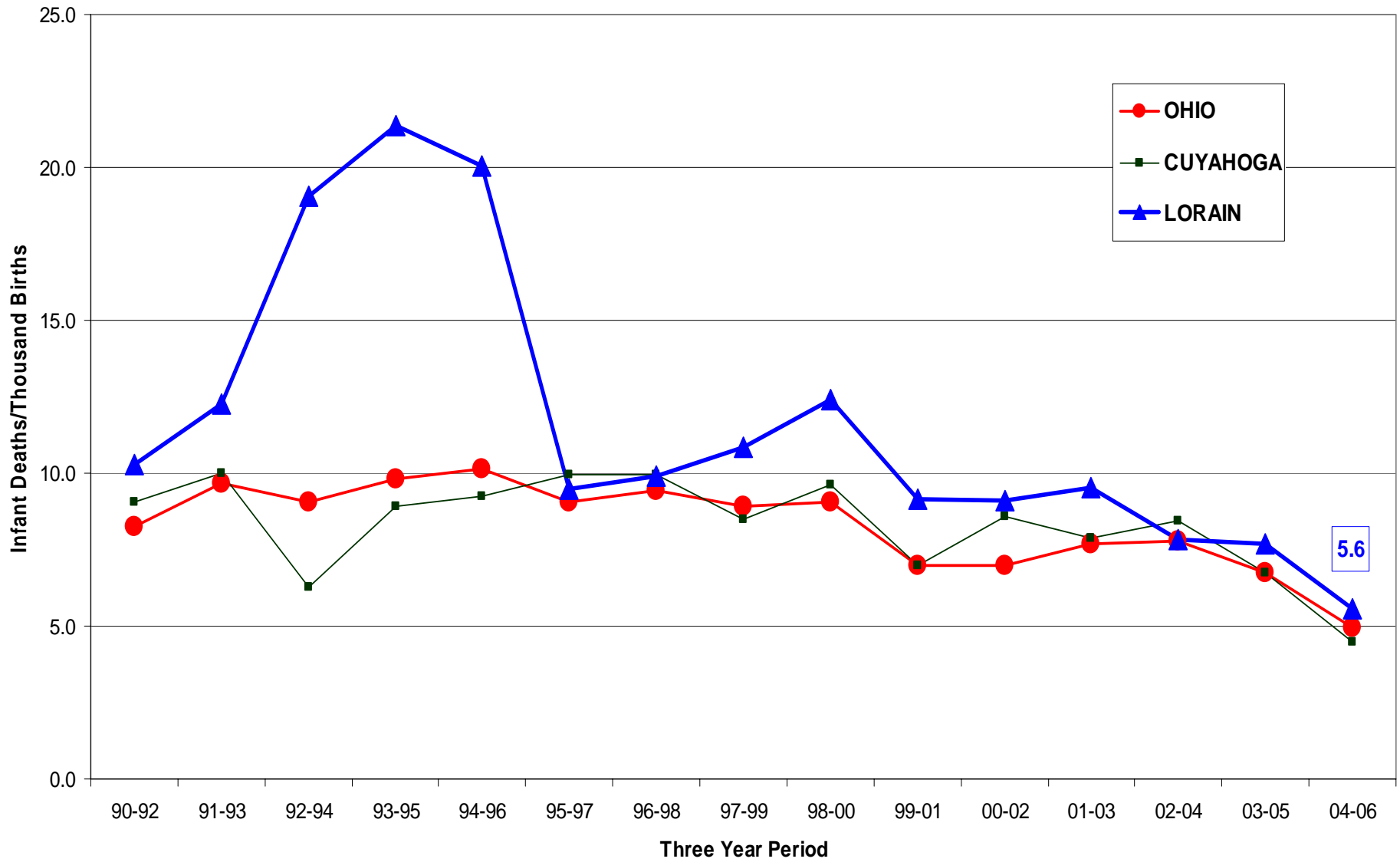
Black to White Ratio Infant Mortality Rate



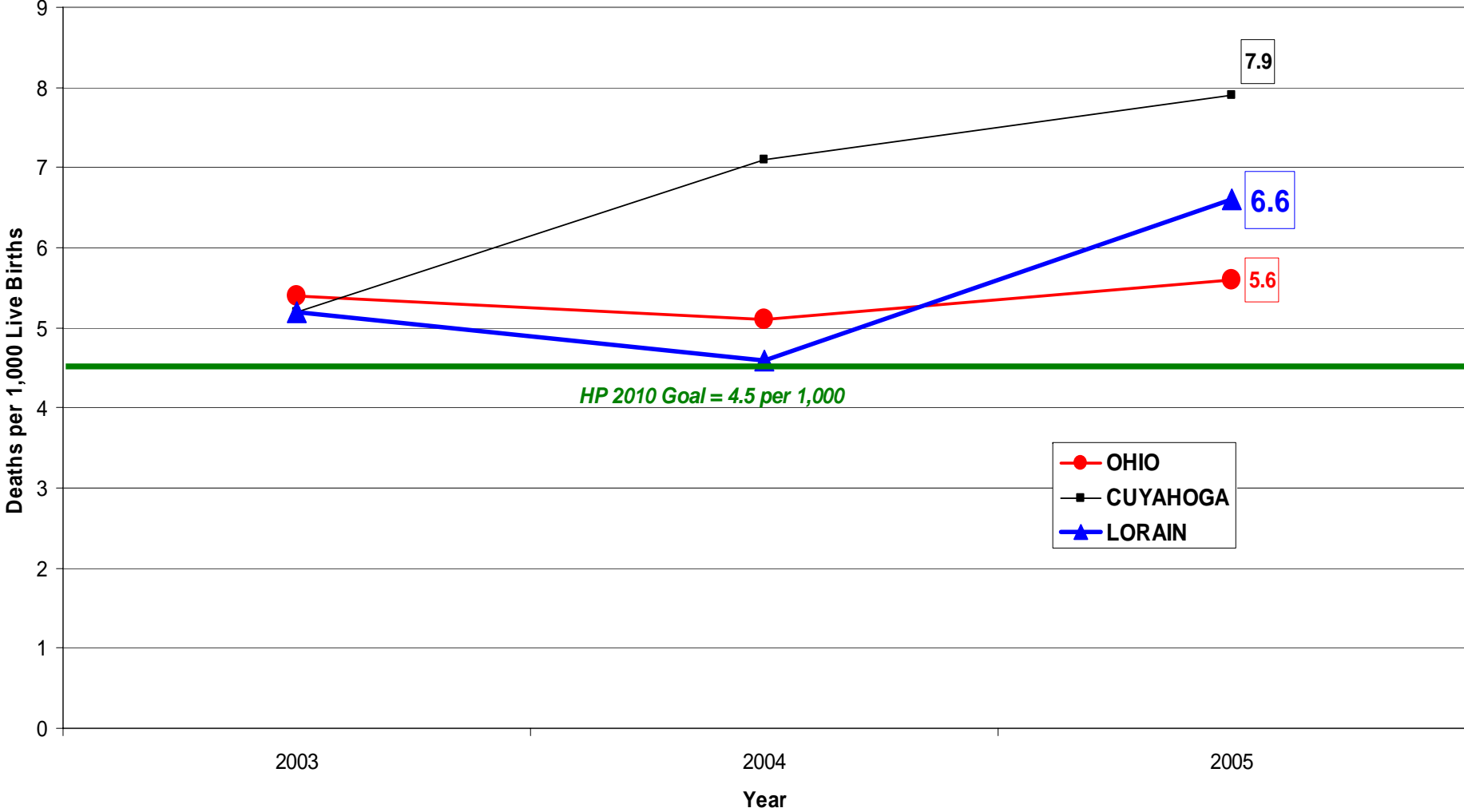
Moving Average Black Infant Mortality Rate



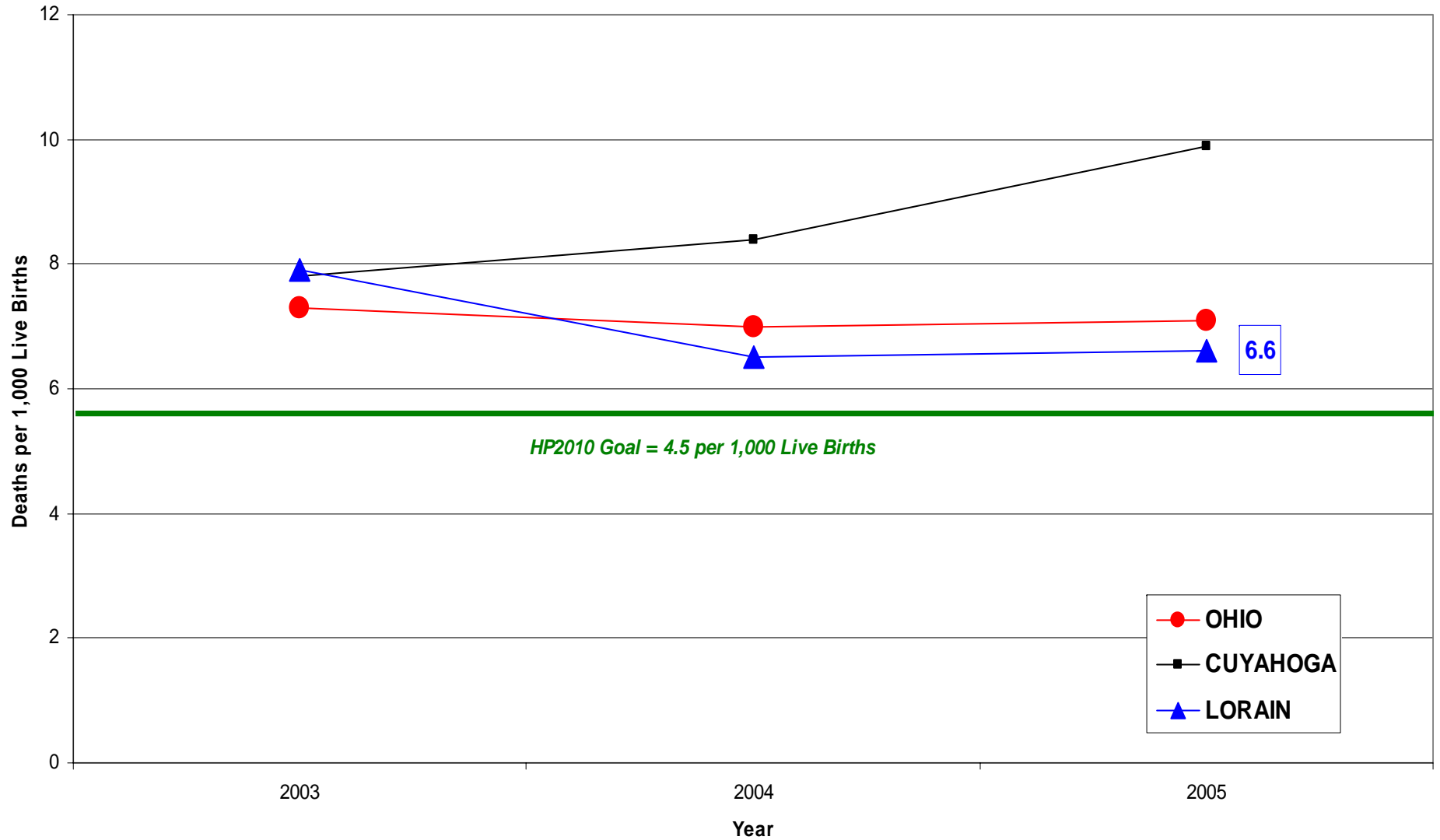
Moving Average Hispanic Infant Mortality Rate



Neonatal Mortality Rate Deaths under 28 Days of Age

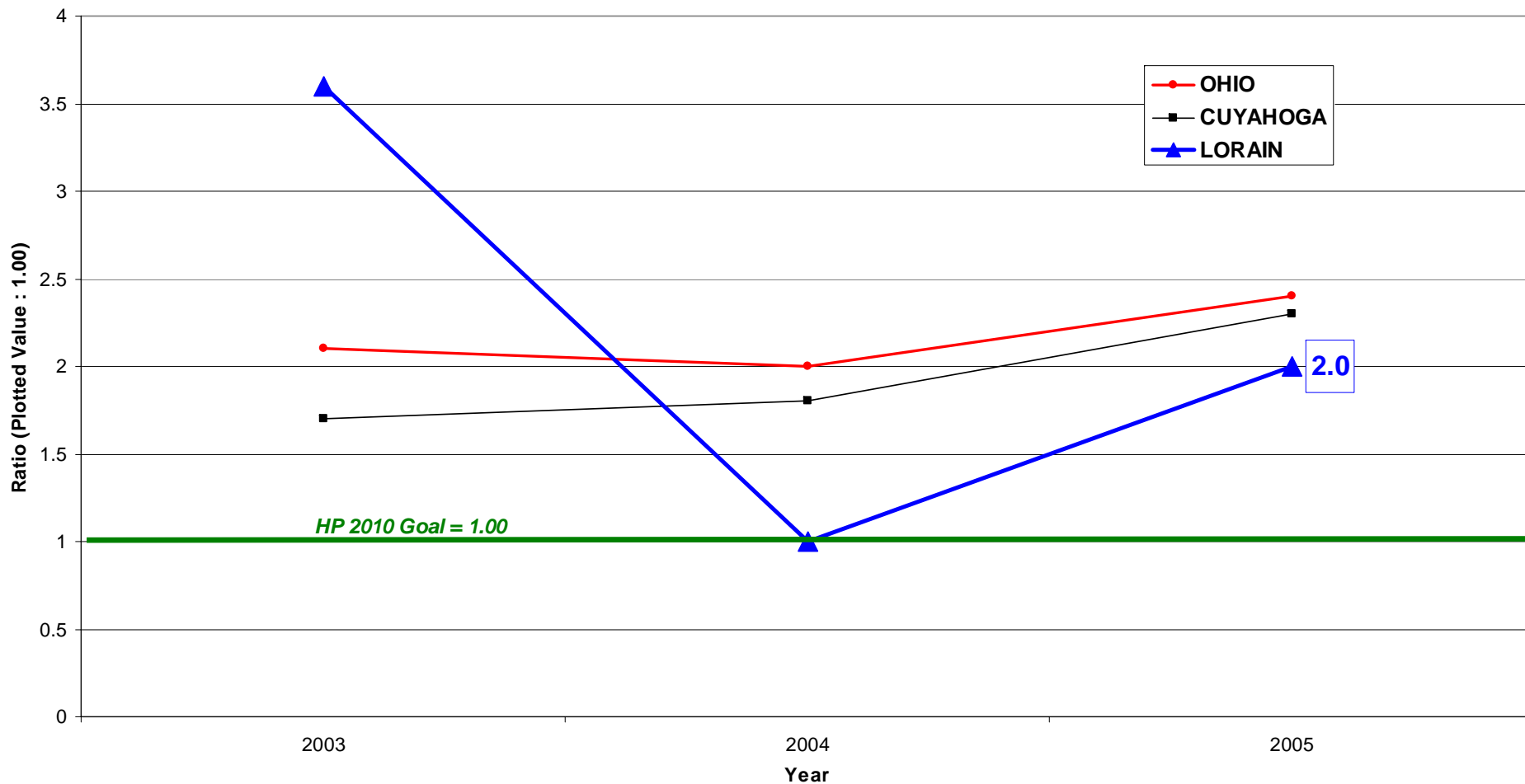


Perinatal Mortality Rate*



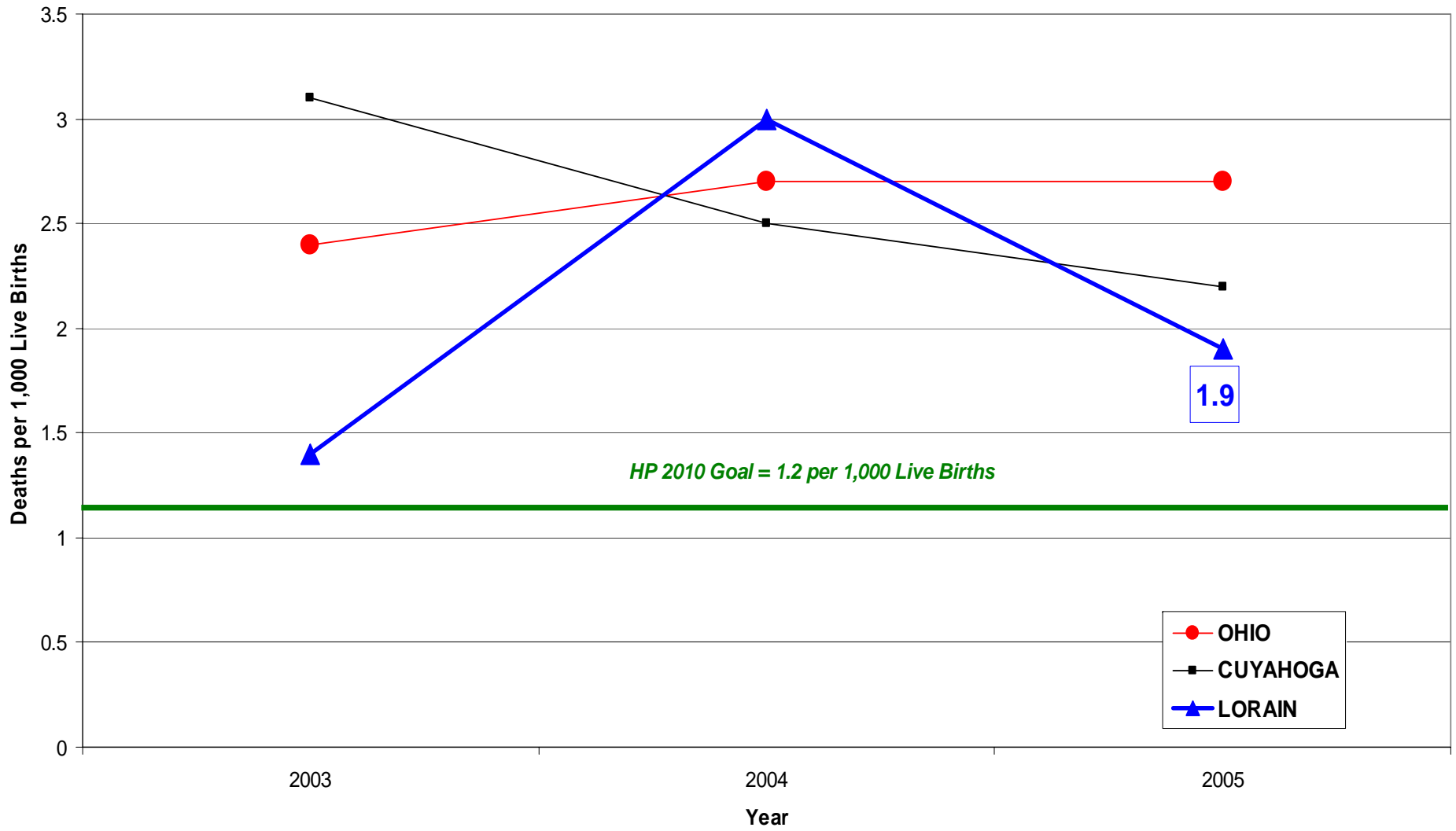
* Number of late fetal deaths (28 wks+ gestation) plus infant deaths within 7 days of birth per 1,000 live births plus late fetal deaths.

Ratio of Black to White Perinatal Mortality Rates *



* Number of late fetal deaths (28 wks+ gestation) plus infant deaths within 7 days of birth per 1,000 live births plus late fetal deaths.

Postneonatal Mortality Rate*



* Number of deaths 28 days to 11 months of age per 1,000 live births.

Incidence of neural tube defects

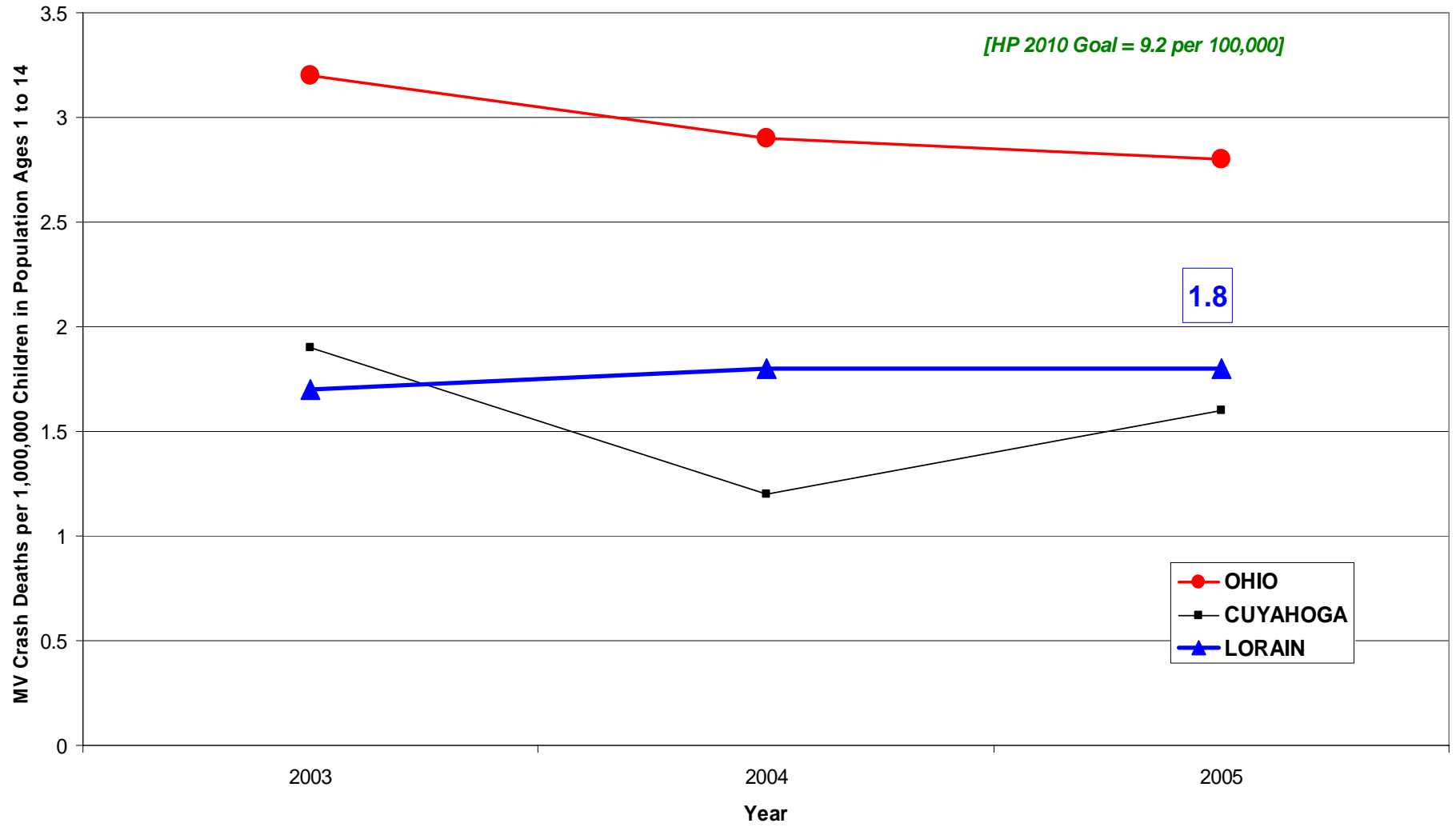
“As of 2006 -- with 3,666 Lorain County resident births -- no anencephaly and no meningocele/spina bifida were detected at birth and noted on birth certificates.” *ODH email*



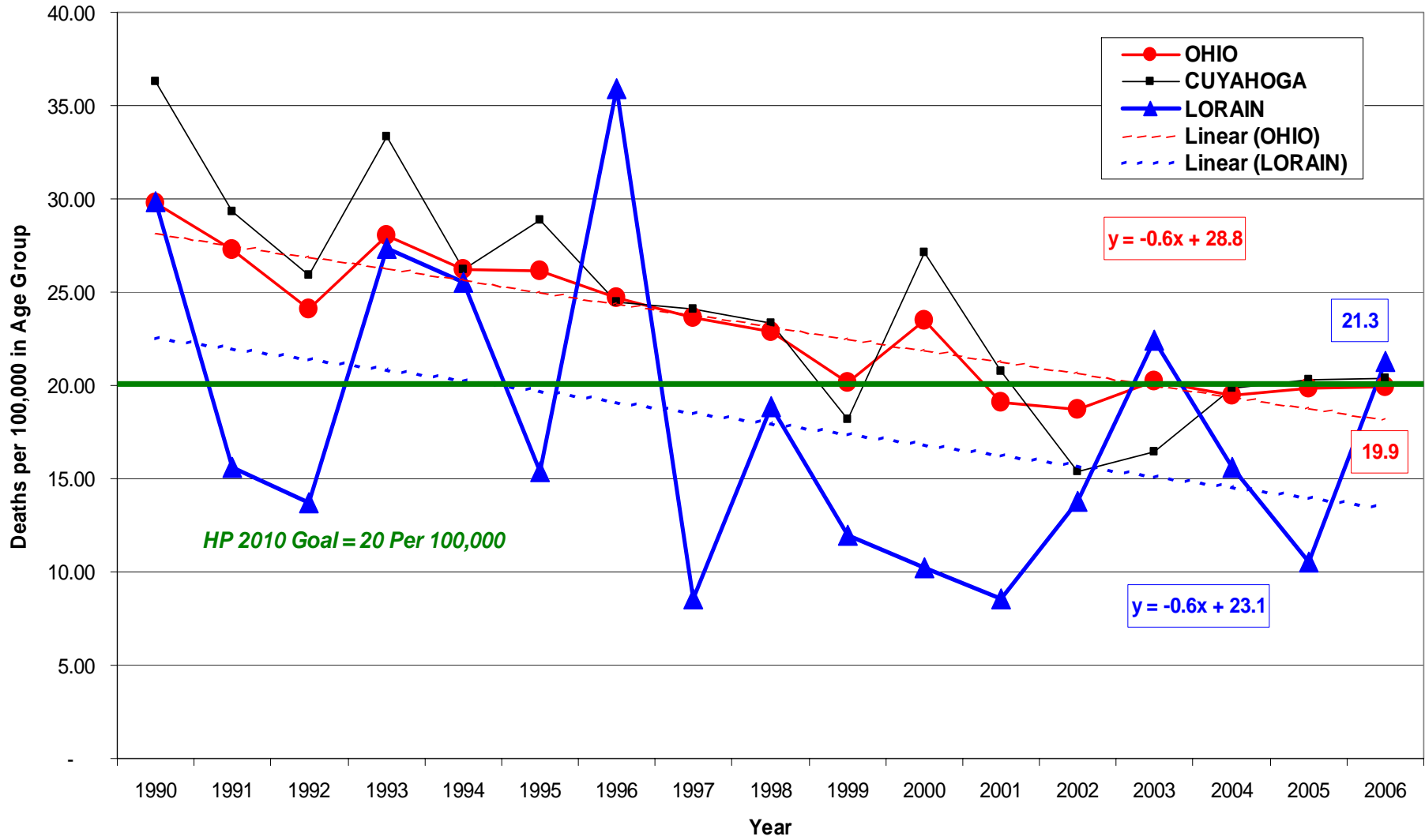
YOUTH MORTALITY

- Lorain County, Cuyahoga County, and the State of Ohio are well below the minimum HP2010 goal for motor vehicle deaths among children ages 1 through 14 (9.2 per 100,000). Lorain County registered 1.8 per 100,000.
- Childhood mortality rate (1 through 14 year olds, from all causes combined) rested at 21.3 per 100,000 in Lorain County and 19.9 per 100,000 in Ohio, both very close to the HP2010 target of 20.0 per 100,000.
- Conversely, teenage mortality was observed to be 57.1 per 100,000 in Lorain County, well above the national goal of 39.8 per 100,000 and on an essentially flat trend line, showing no substantial downward slope.
- Teenage suicide rates in Lorain County met or exceeded the national benchmark of 5.0 per 100,000 three times since the year 2000, but the most recent reading was 19.0 per 100,000. Oscillation above and below the trend line partially reflects Lorain County's relatively smaller population than Ohio's (which also shows a similar pattern of annual upswings and downturns).
- ODH provided first-time statistics on immunization and blood levels for lead.

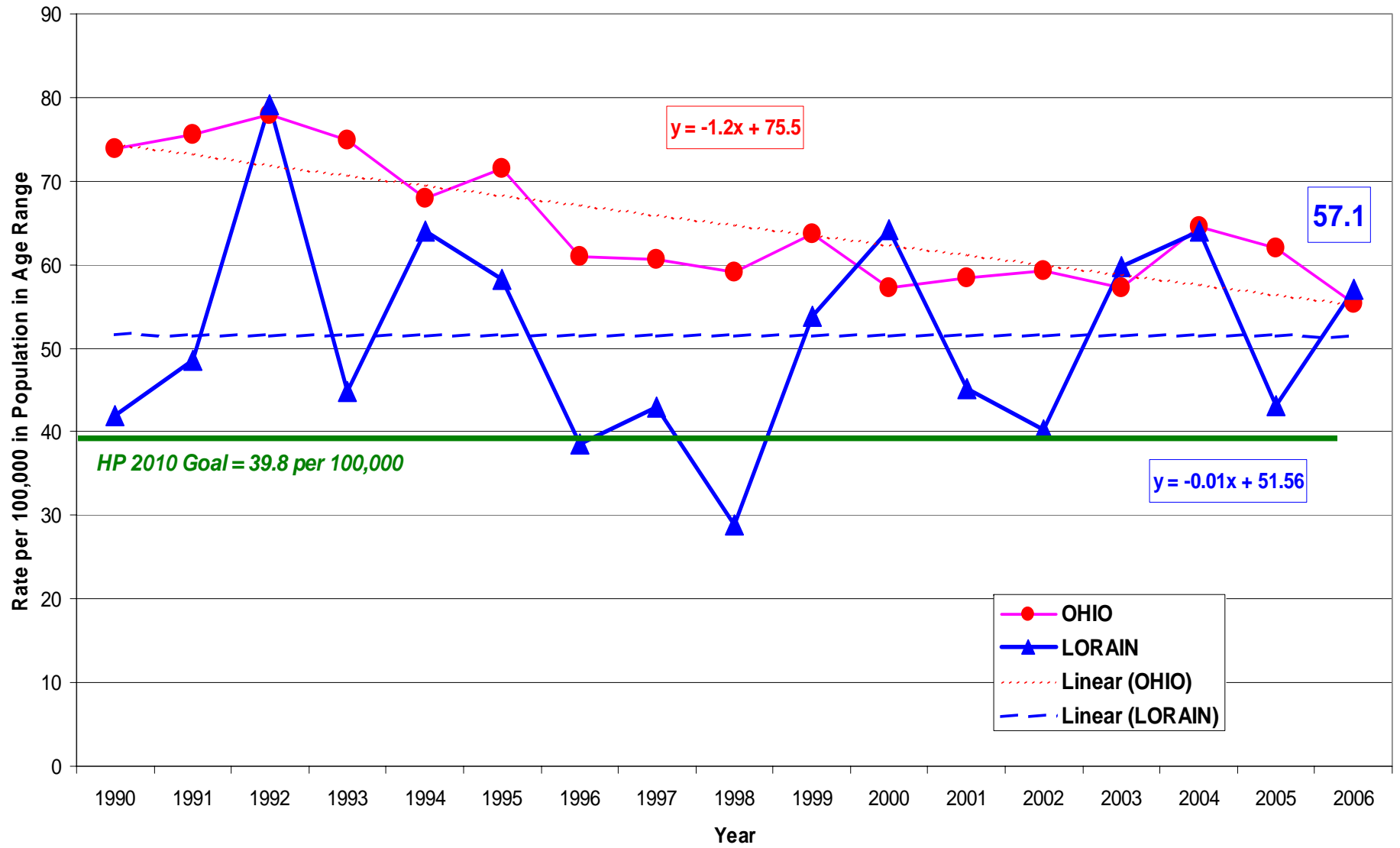
Child Motor Vehicle Crash Death Rates



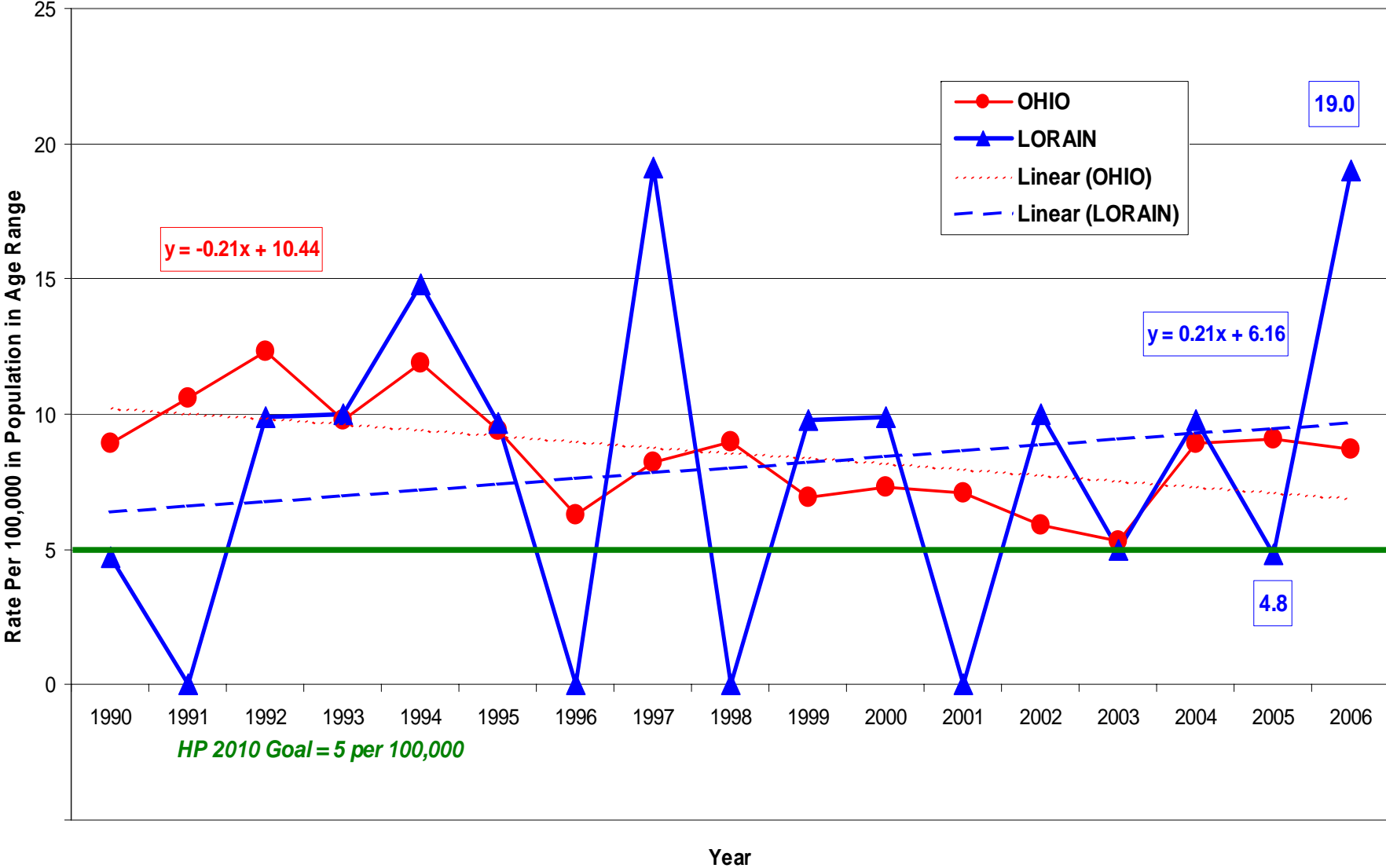
Youth Mortality Rate (Ages 1 through 14)



Mortality Rate Ages 15 through 19



Suicide Rates of Teens 15 to 19



Immunization

“The Healthy People 2010 goal is to measure how many children 0-6 yrs of age have 2 or more immunization records in an immunization information system.

Lorain County has 66% of the 0-6 population with 2 or more immunization records in ImpactSIIS. The goal is to reach 90% by 2010.” *ODH email*



Lead in Blood

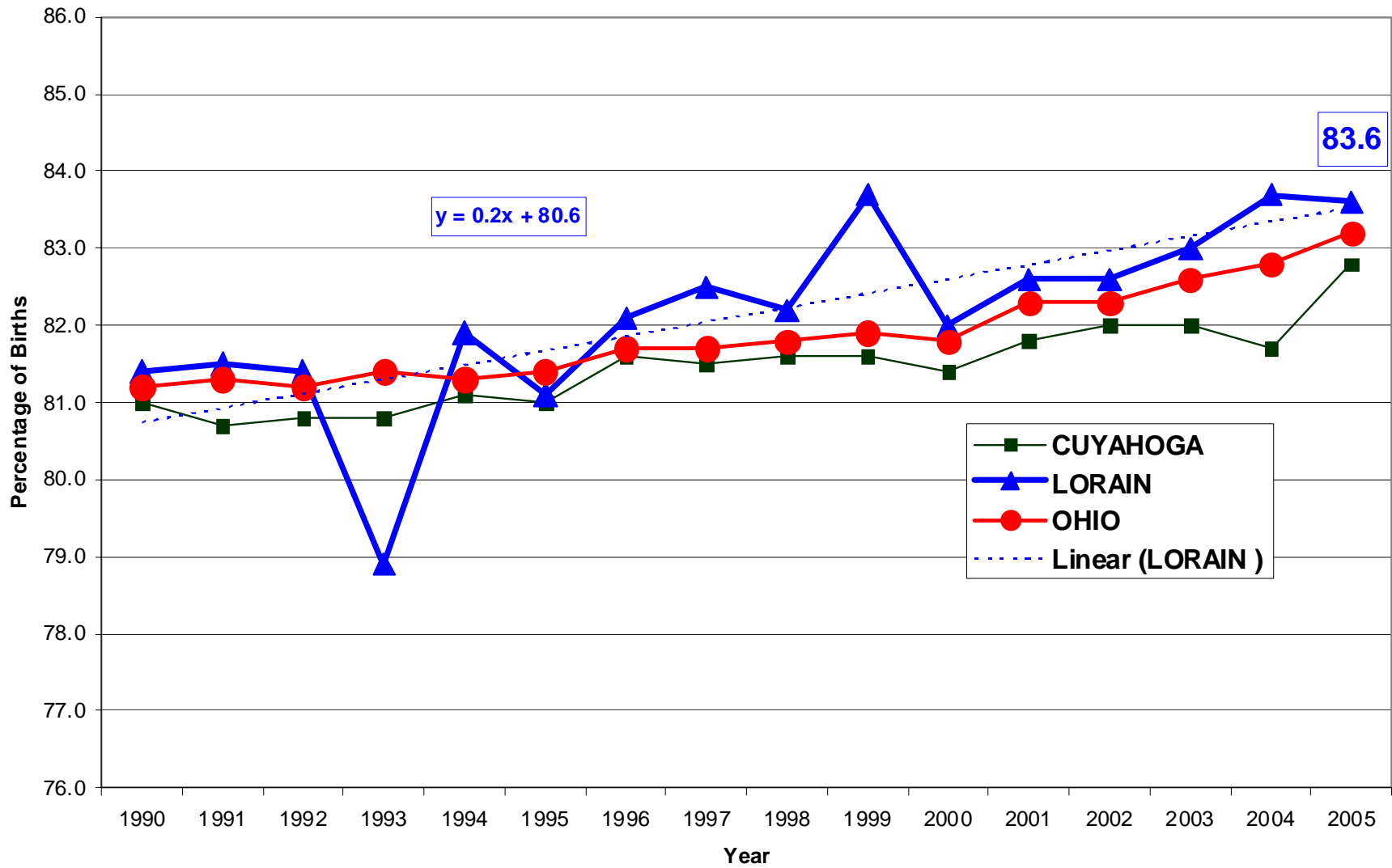
“In Lorain County in 2007 .85% of the tested children less than 6 years of age had an elevated blood lead level.” *ODH email*



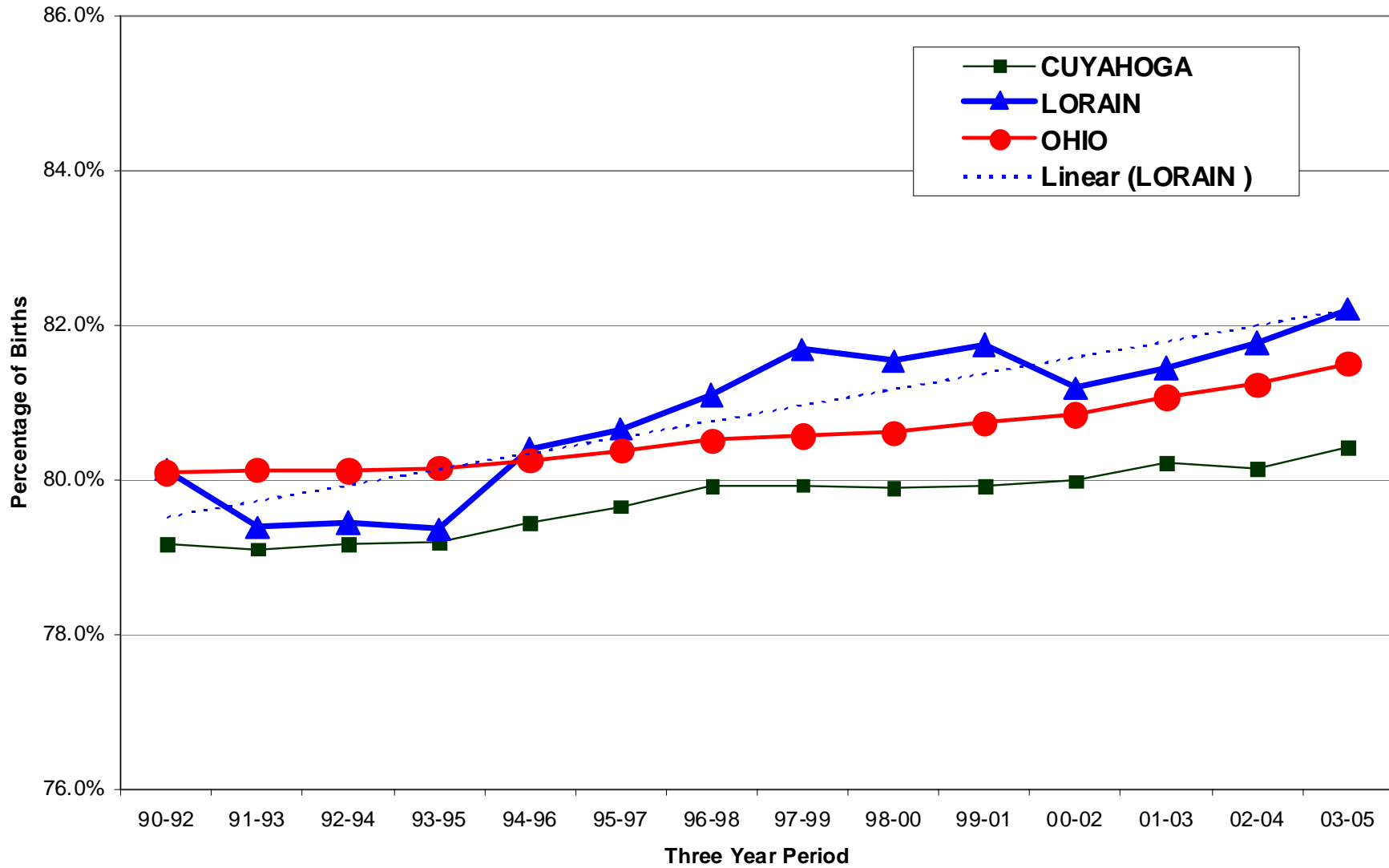
BIRTHWEIGHT

- Birthweights within the “normal” range continue to rise steadily in Lorain County and the rest of Ohio. But low birthweights were **also** on the rise – at 8.4% of Lorain County births in 2005 – and moving **away** (at a rate of 0.12% a year) from the HP2010 benchmark. Lorain County’s trend for **very** low birthweights was essentially flat, although some year-to-year fluctuations were observable.
- High birthweights – 4,000 grams and over – constituted a diminishing share of Lorain County’s and Ohio’s births, respectively.
- Lorain County gave evidence of moving toward the HP2010 goal of having 90% of very low birthweight infants delivered at Level 3 medical facilities.
- Premature births, however, were trending unfavorably -- 13.0% in Lorain County versus the national goal of 7.6% by 2010 – and **rising** at a rate of 0.1% per year. Ohio and Cuyahoga County showed evidence of the same alarming trend.

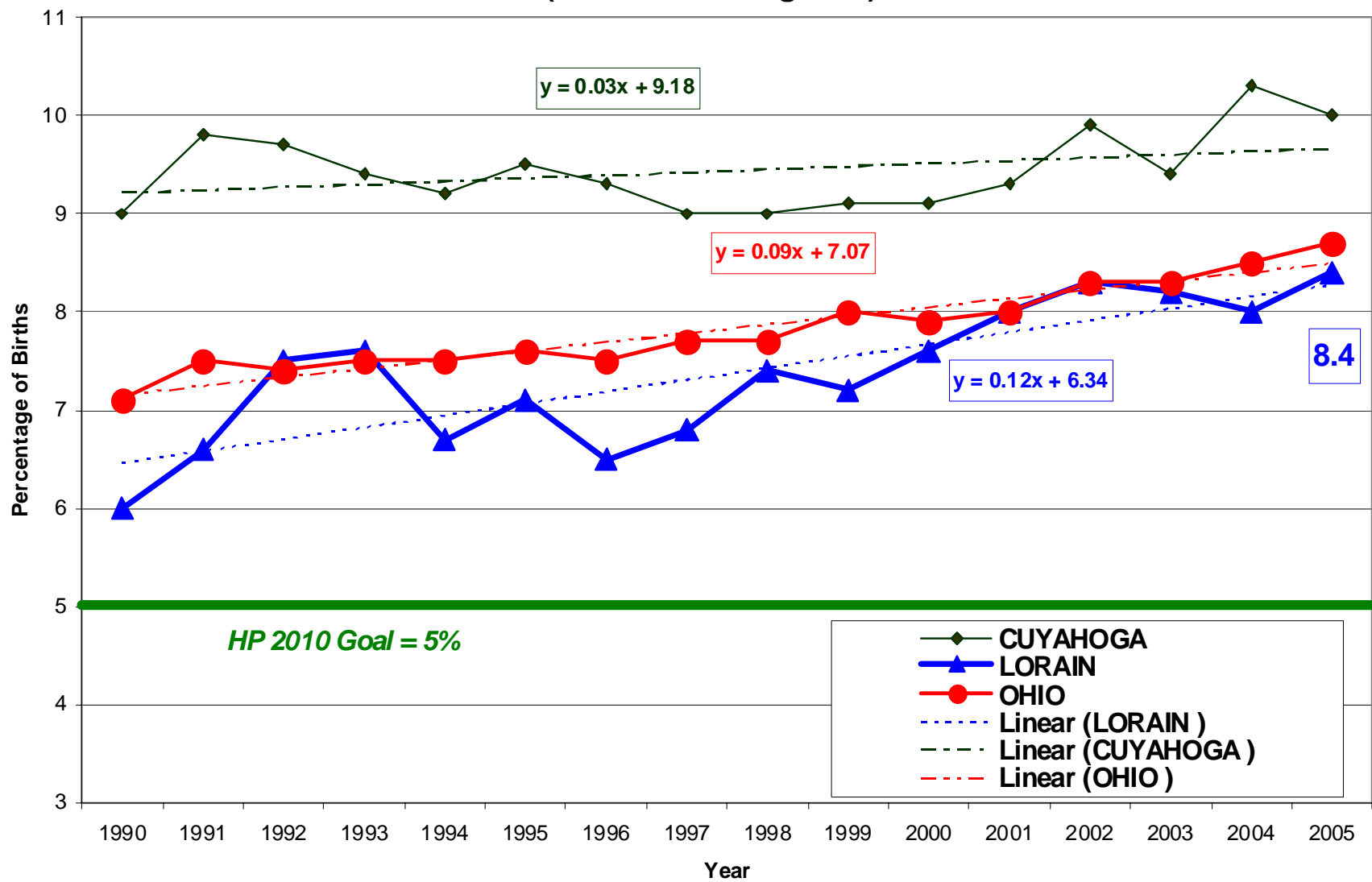
Percentage Normal Birth Weight (2500 to 3999 grams)



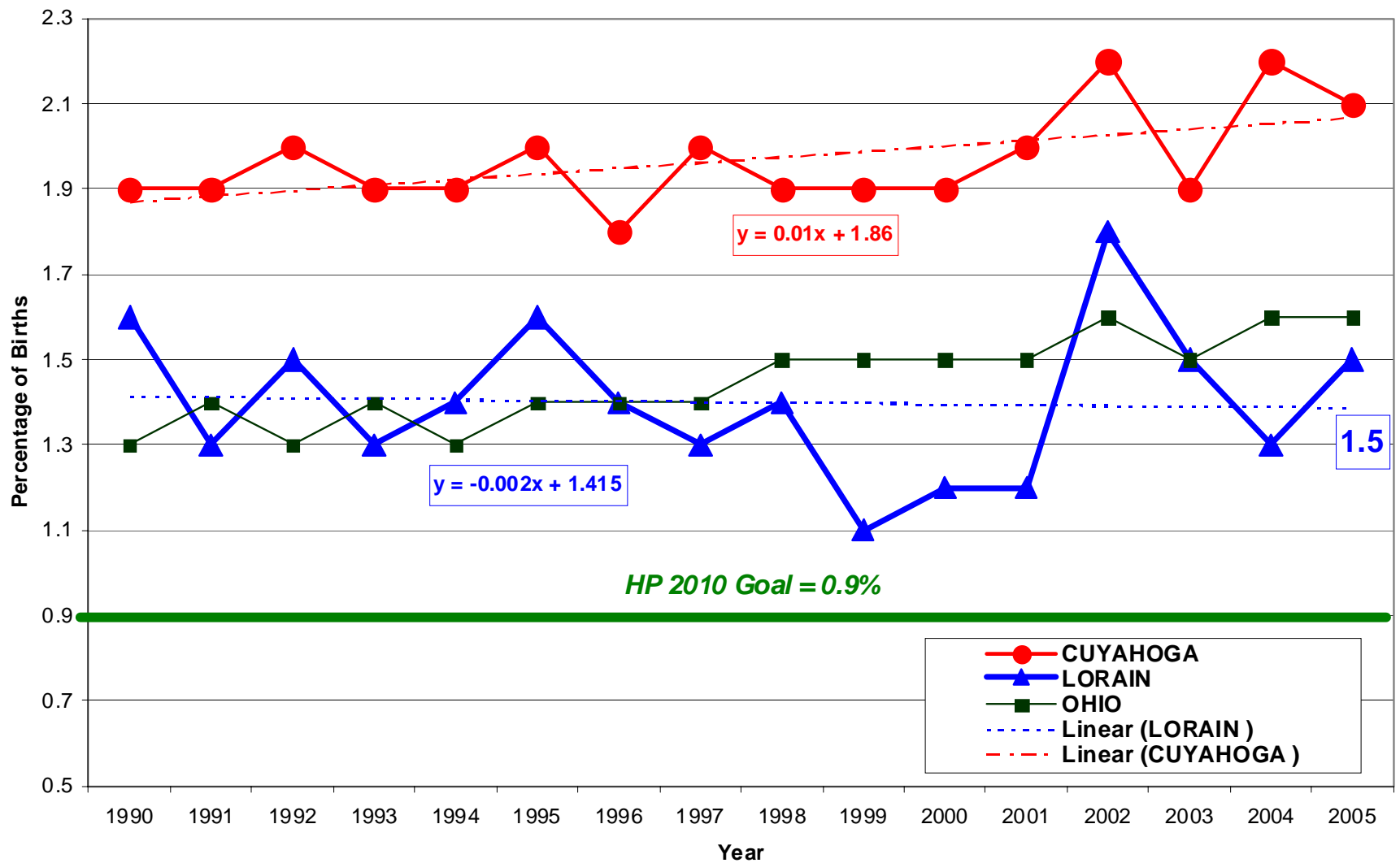
Moving Average Percentage Normal Birthweights (2500 to 3999 grams)



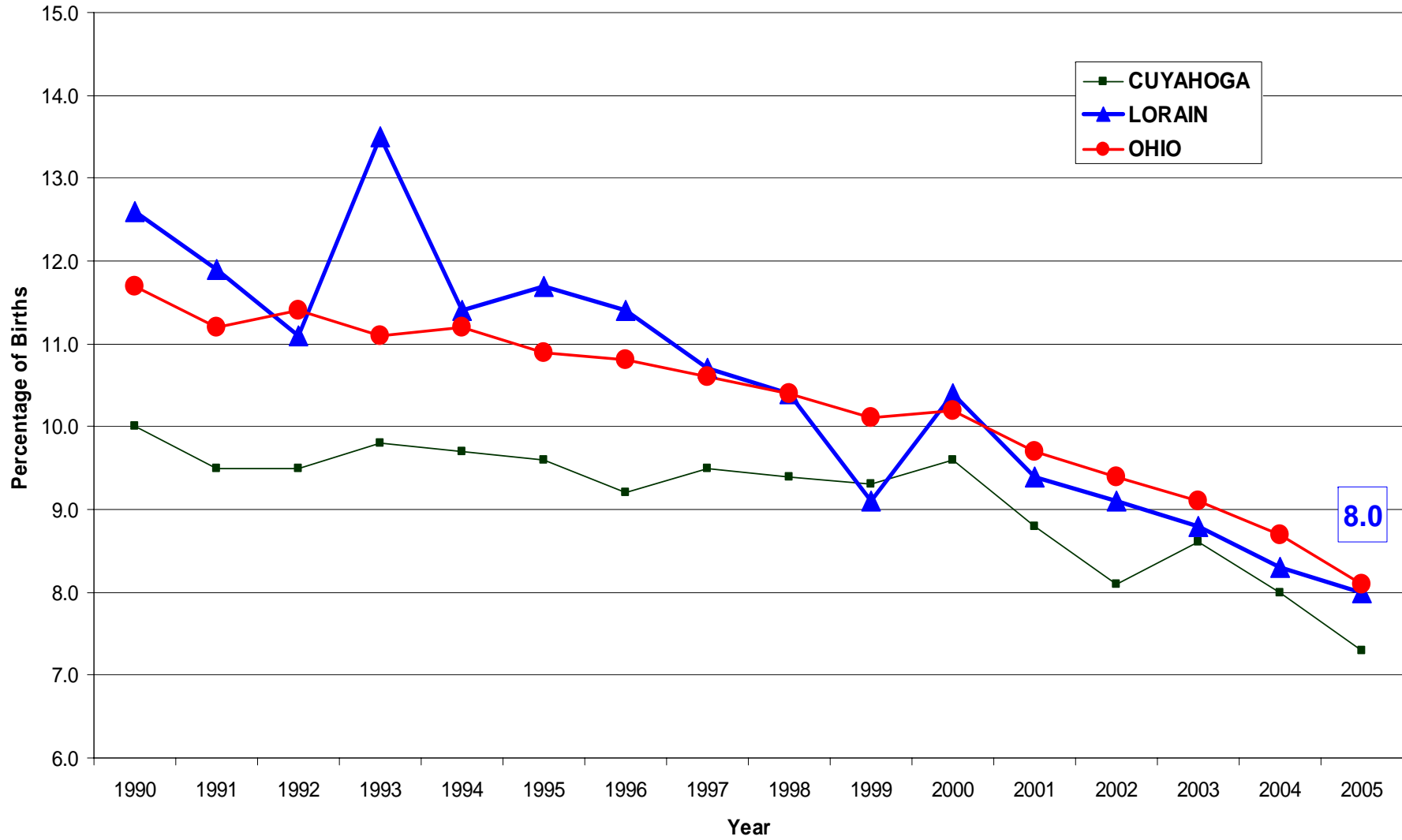
Low Birthweights (Less than 2500 grams)



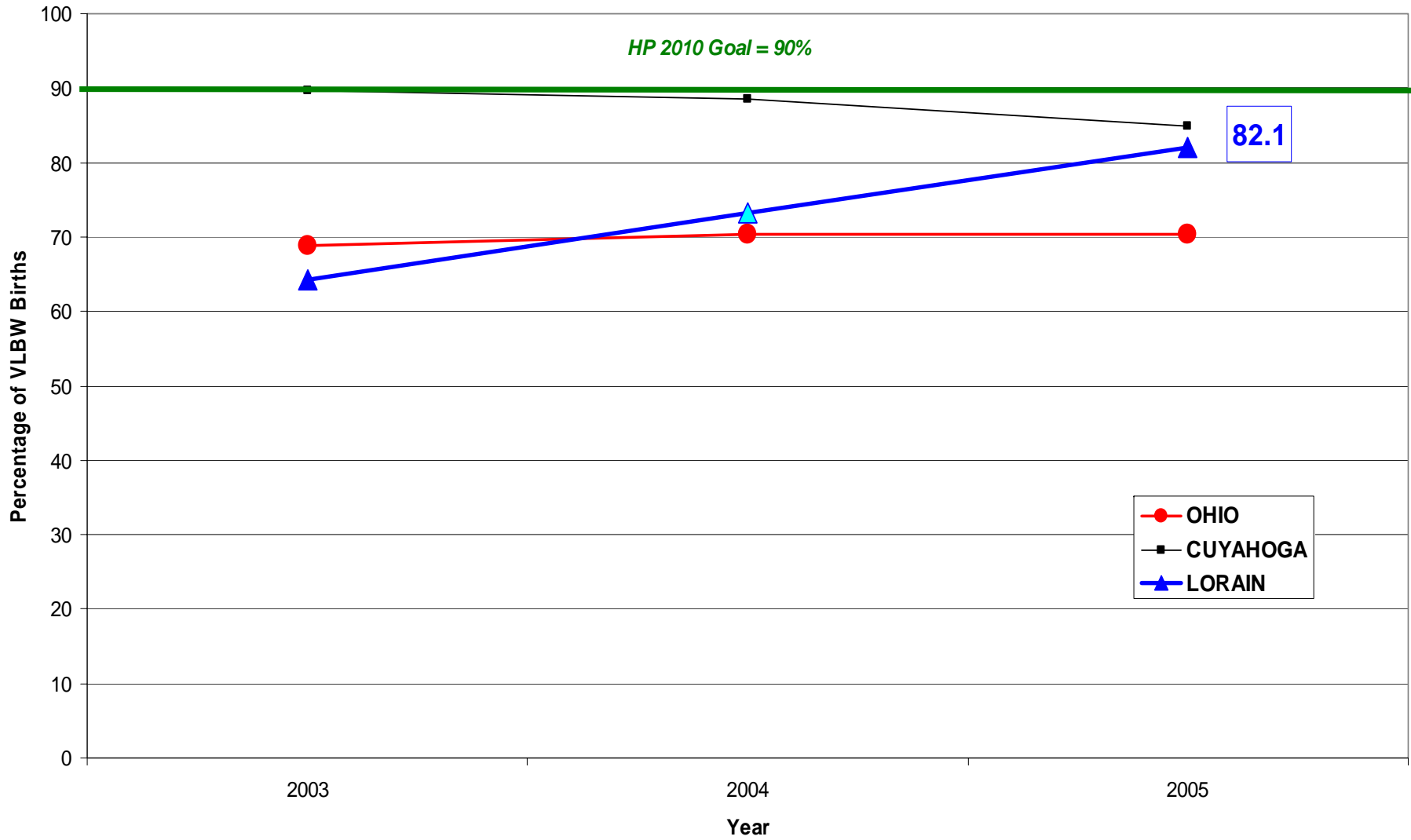
Very Low Birthweights (Less than 1500 grams)



Percentage High Birthweights 4000+ Grams

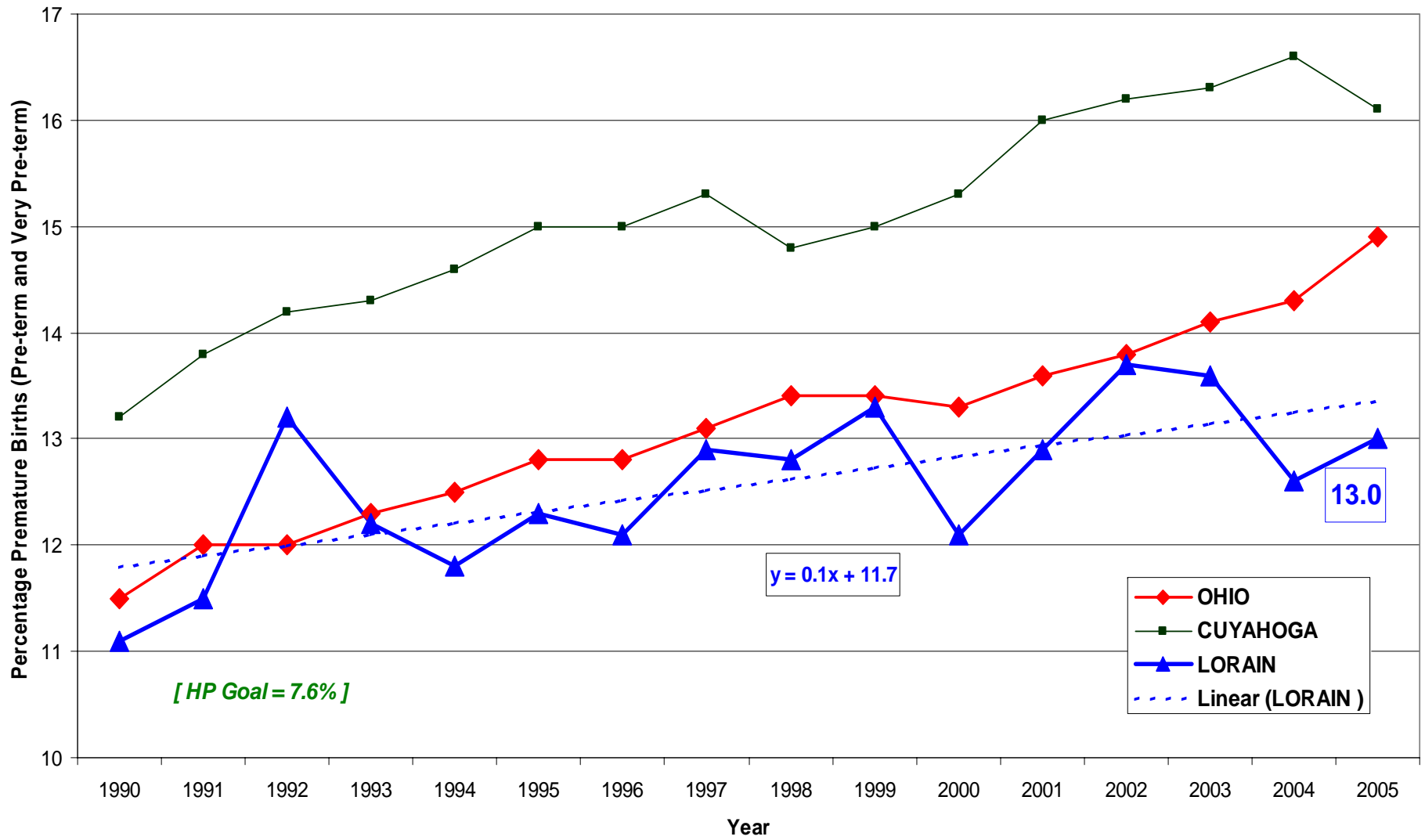


VLBW Infants Delivered at Level 3 Facilities



2004 value for Lorain County was not available from ODH and has been linearly interpolated.

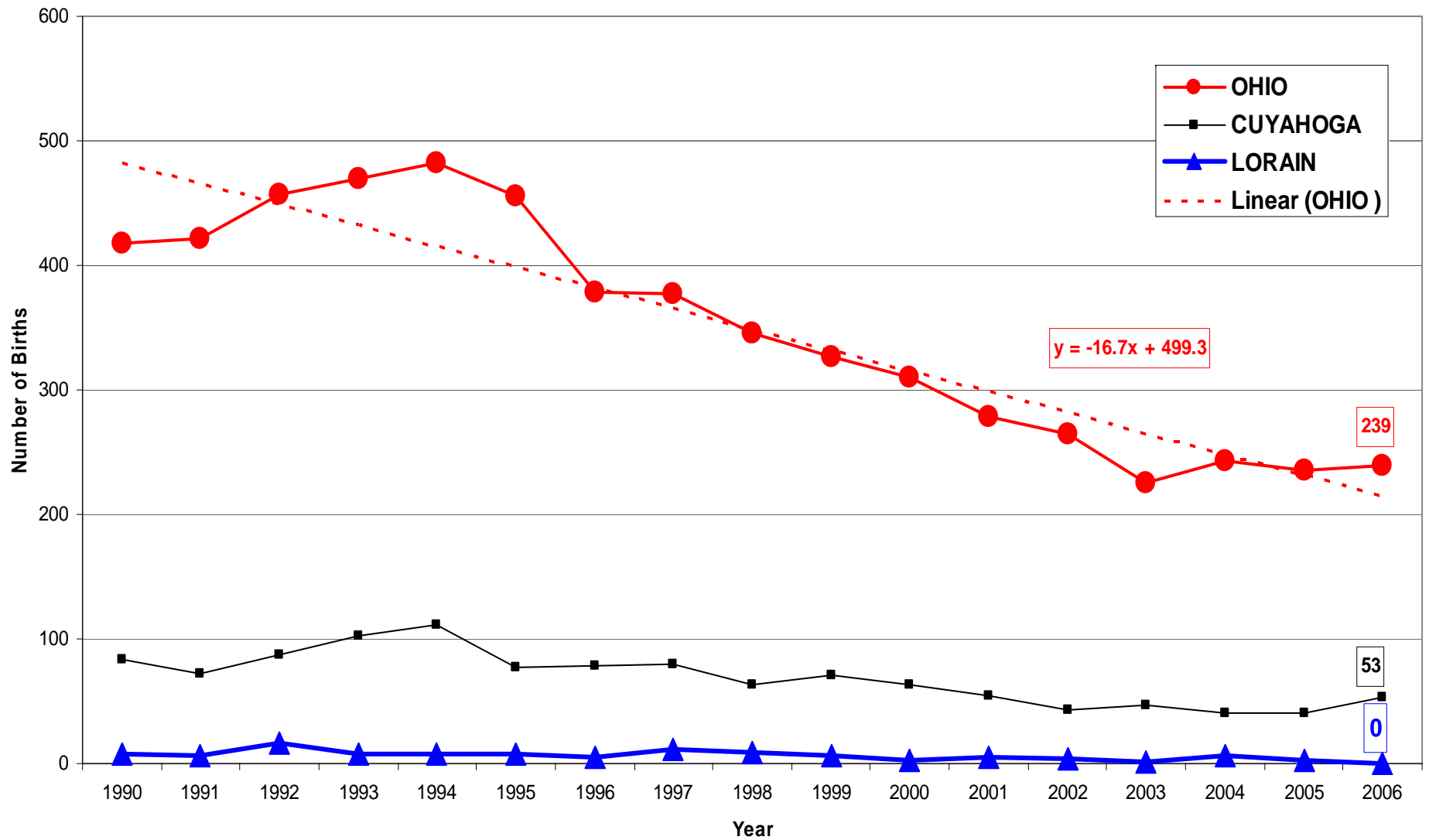
Premature Birth Rate



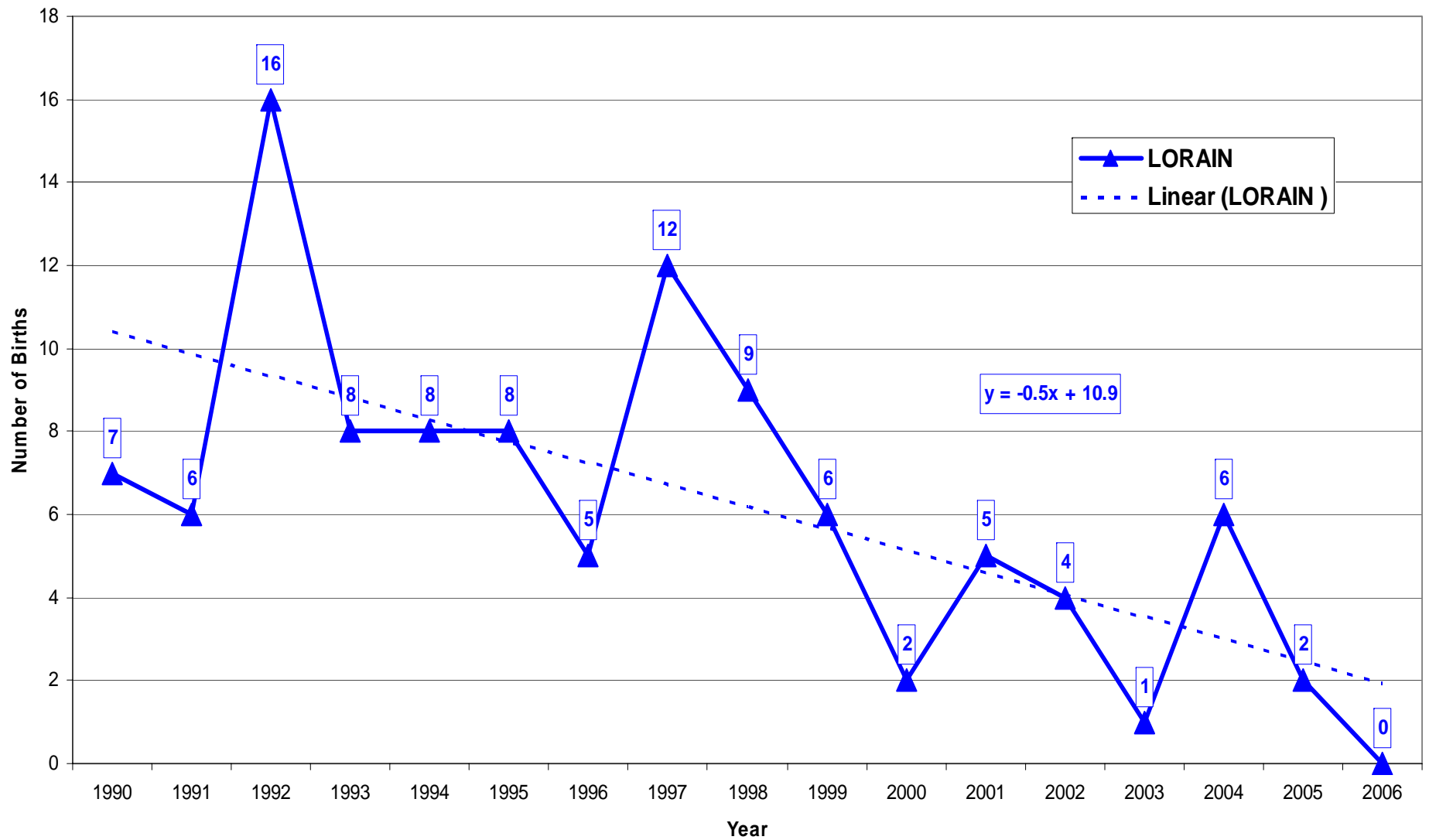
PRENATAL CARE

- Births to very young mothers (less than 15 years old) continue to downtrend and rested at zero in Lorain County as of 2006. This number has remained below double digits since 1998.
- Births to teens 15 to 17 similarly moved lower, yet Lorain County still registered 116 such births in 2006, the highest level since 2001. Some evidence of a possible upshift appears in the data for 2002 through 2006, most recently at 17.8 per 1,000 females ages 15 through 17.
- Although moving downward, the rate of smoking among Lorain County's pregnant women remained distressingly high at 20.4% in 2006, far exceeding the HP2010 goal of 1.0%.
- Less than 1% of Lorain County mothers-to-be forego all prenatal care.
- Lorain County and Cuyahoga County have been followed nearly identical lines of improvement in adequacy of prenatal care, now at 83.1% in Lorain County.
- Where Cuyahoga County and the State of Ohio appear to be losing some ground on first trimester entry into prenatal care, Lorain County demonstrates steady improvement and stood at a level of 89.1% in 2005.

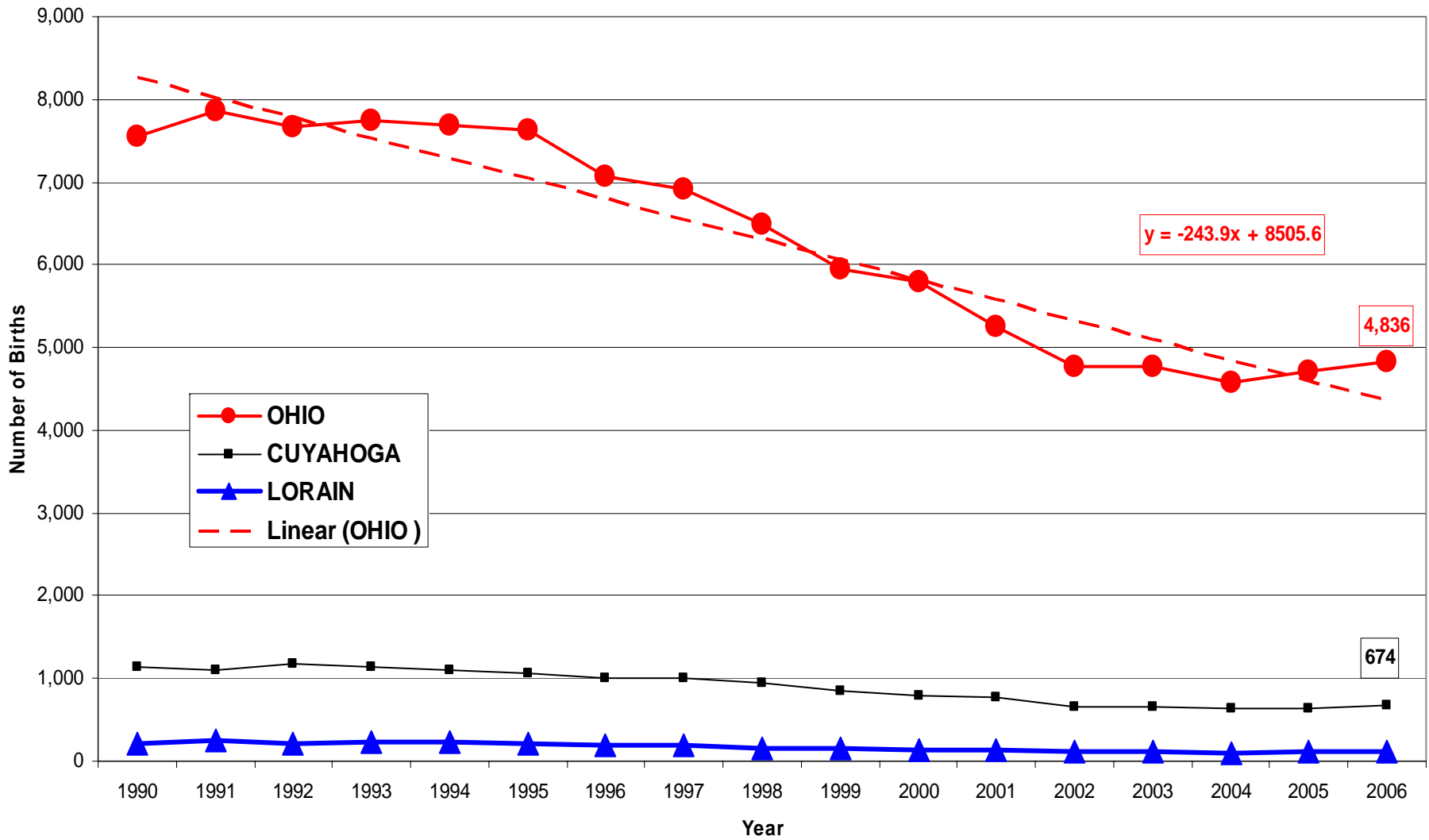
Births to Mothers Younger than Fifteen Years Old



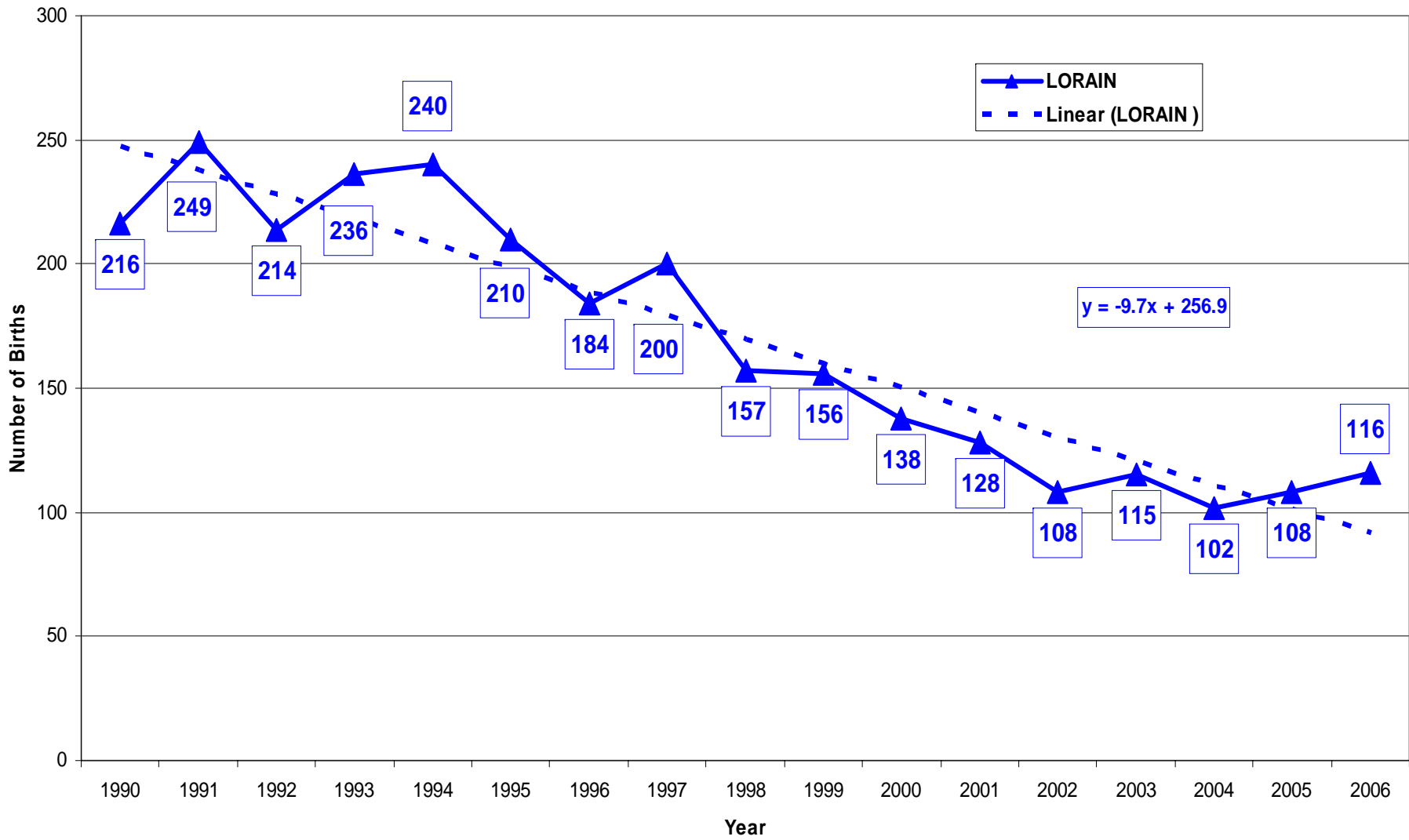
Births to Mothers Younger than Fifteen Years Old



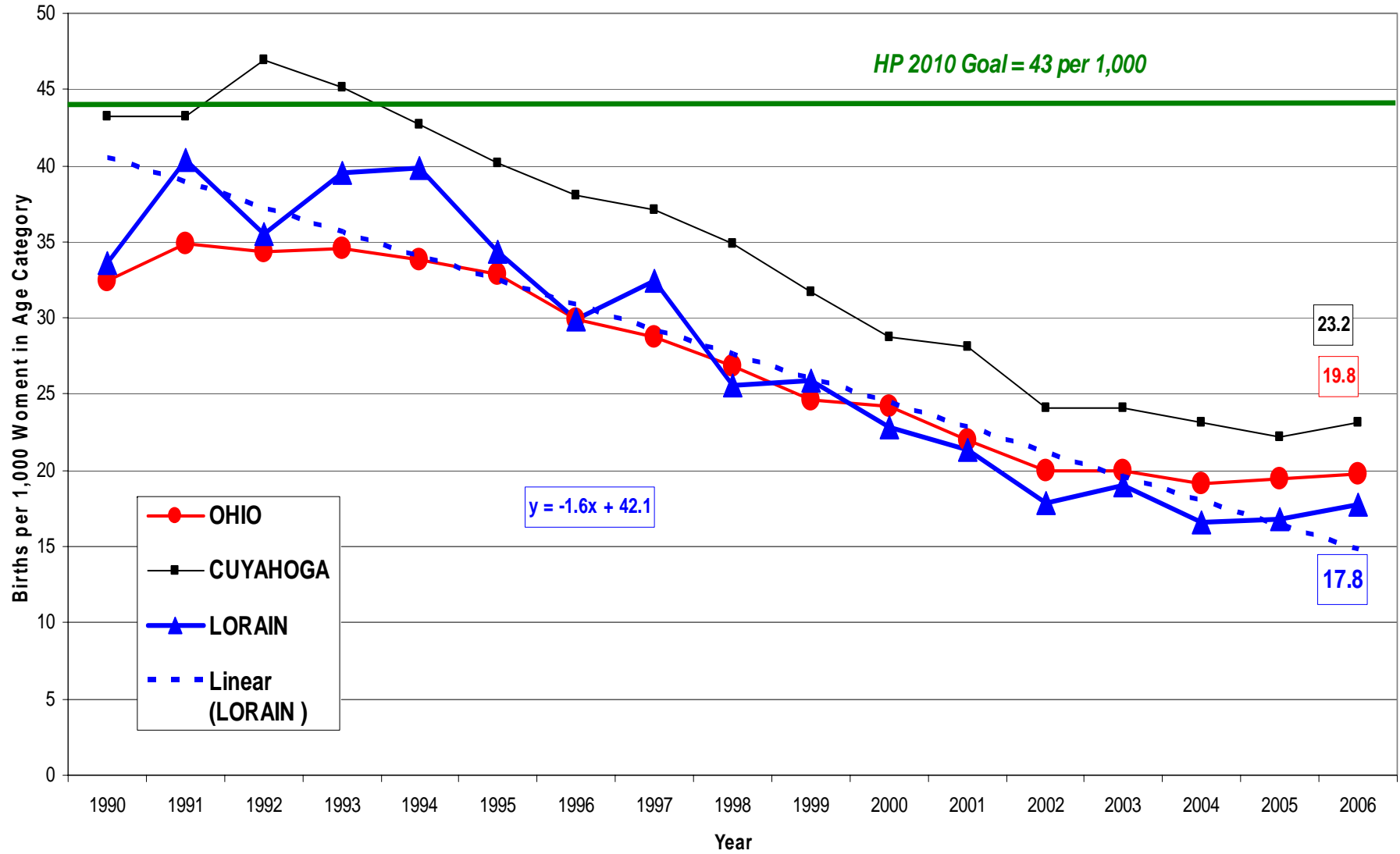
Births to Mothers Age 15 through 17



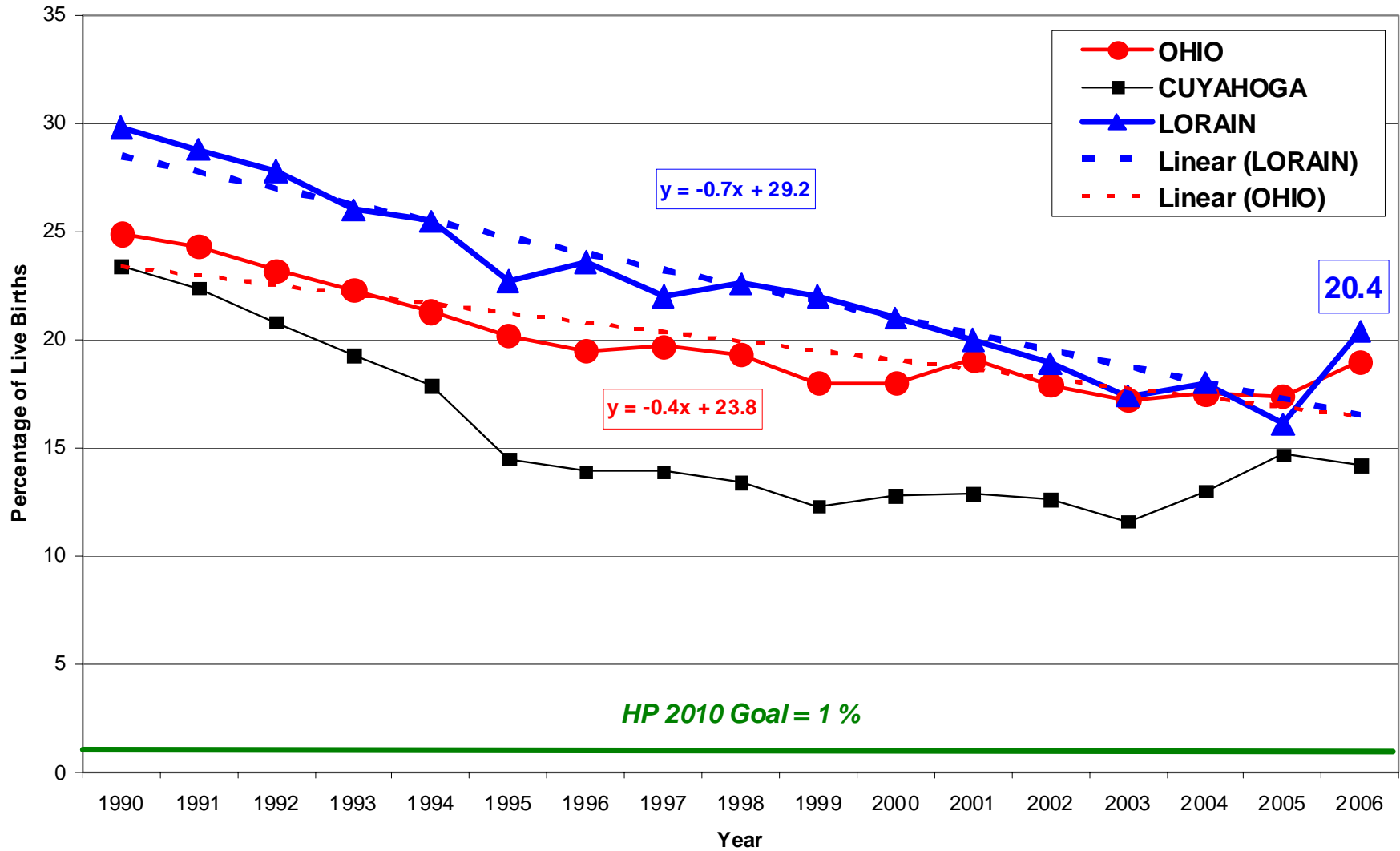
Births to Mothers Age 15 through 17



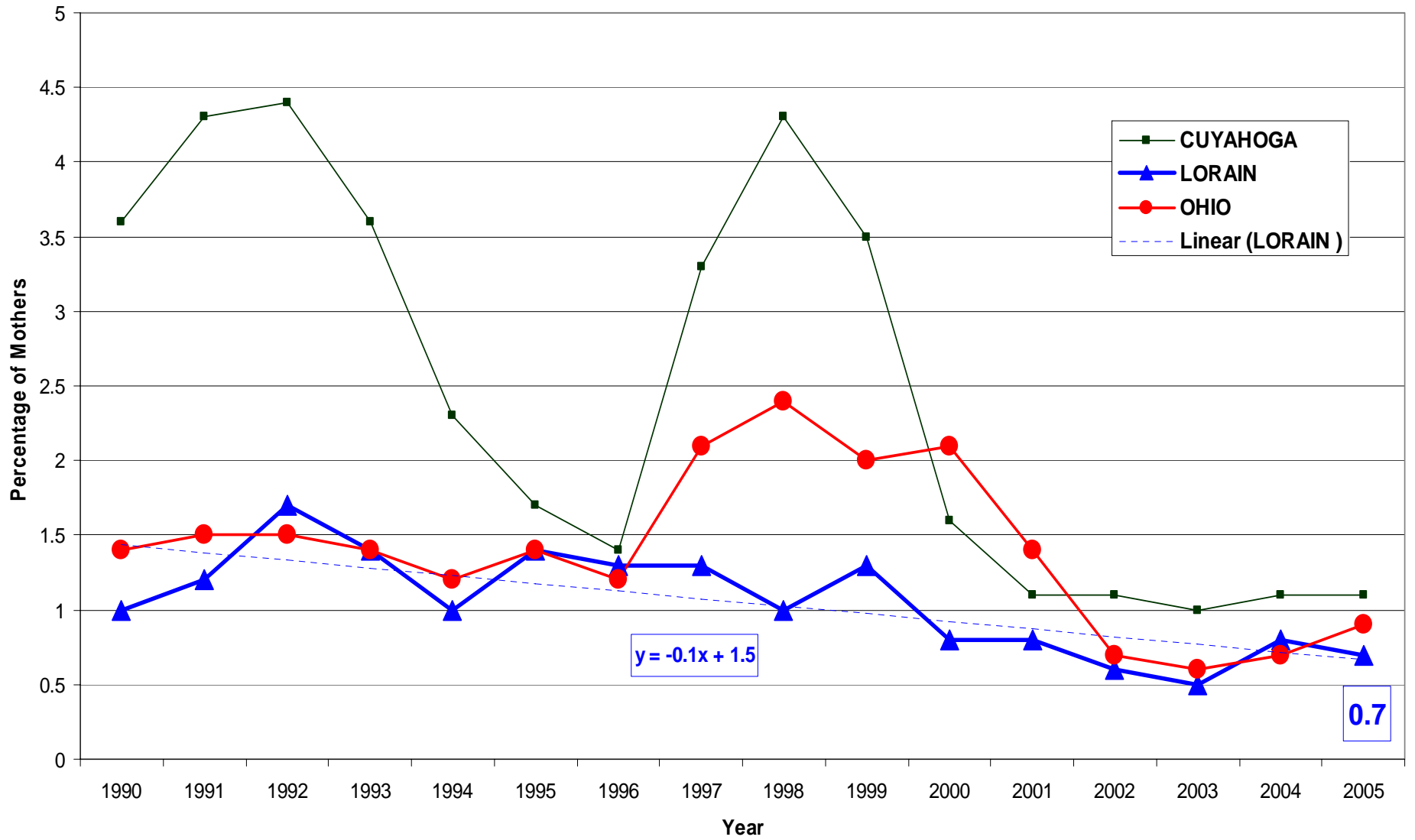
Birth Rates Women Age 15 through 17



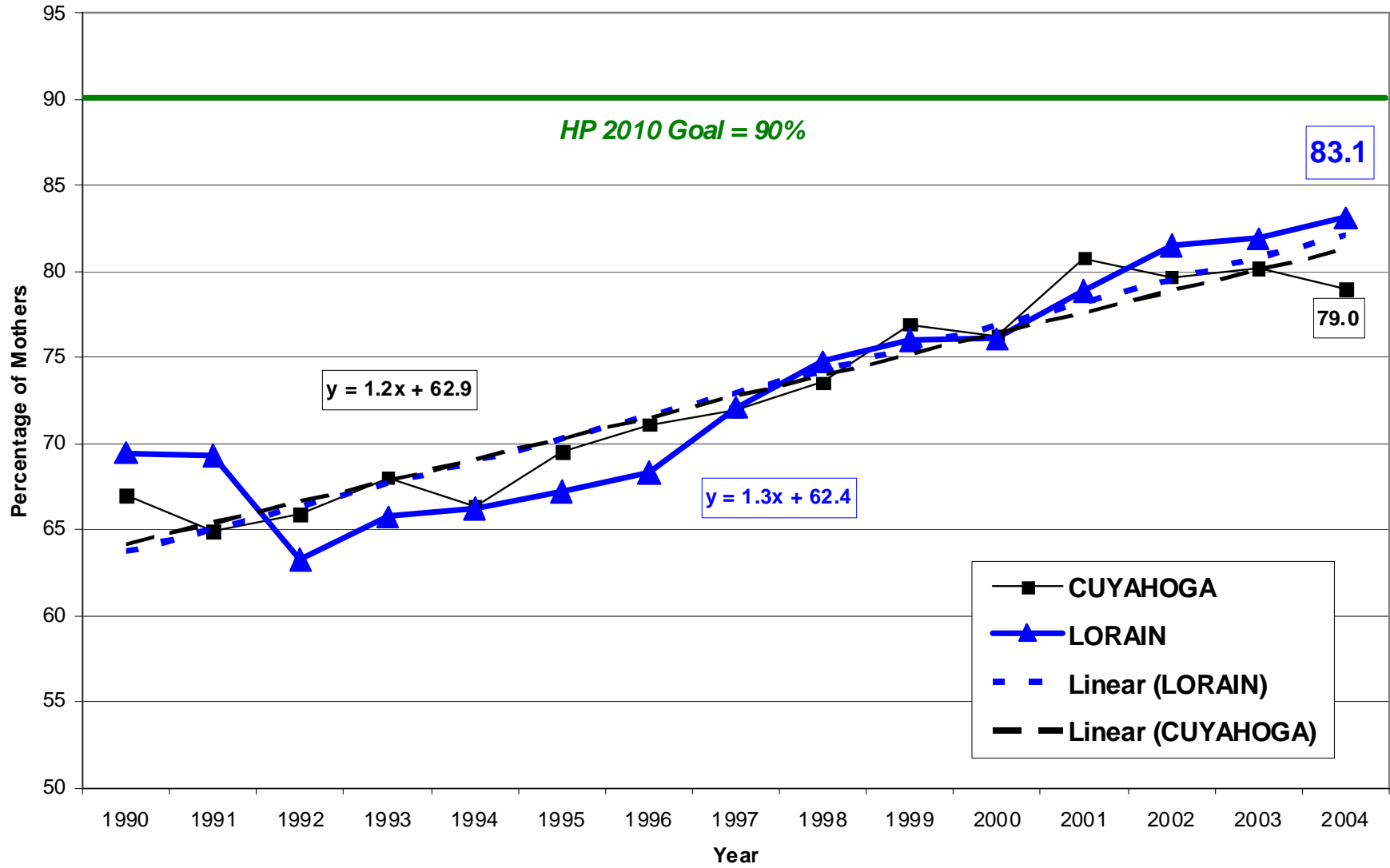
Births to Mothers Who Reported Smoking during Pregnancy



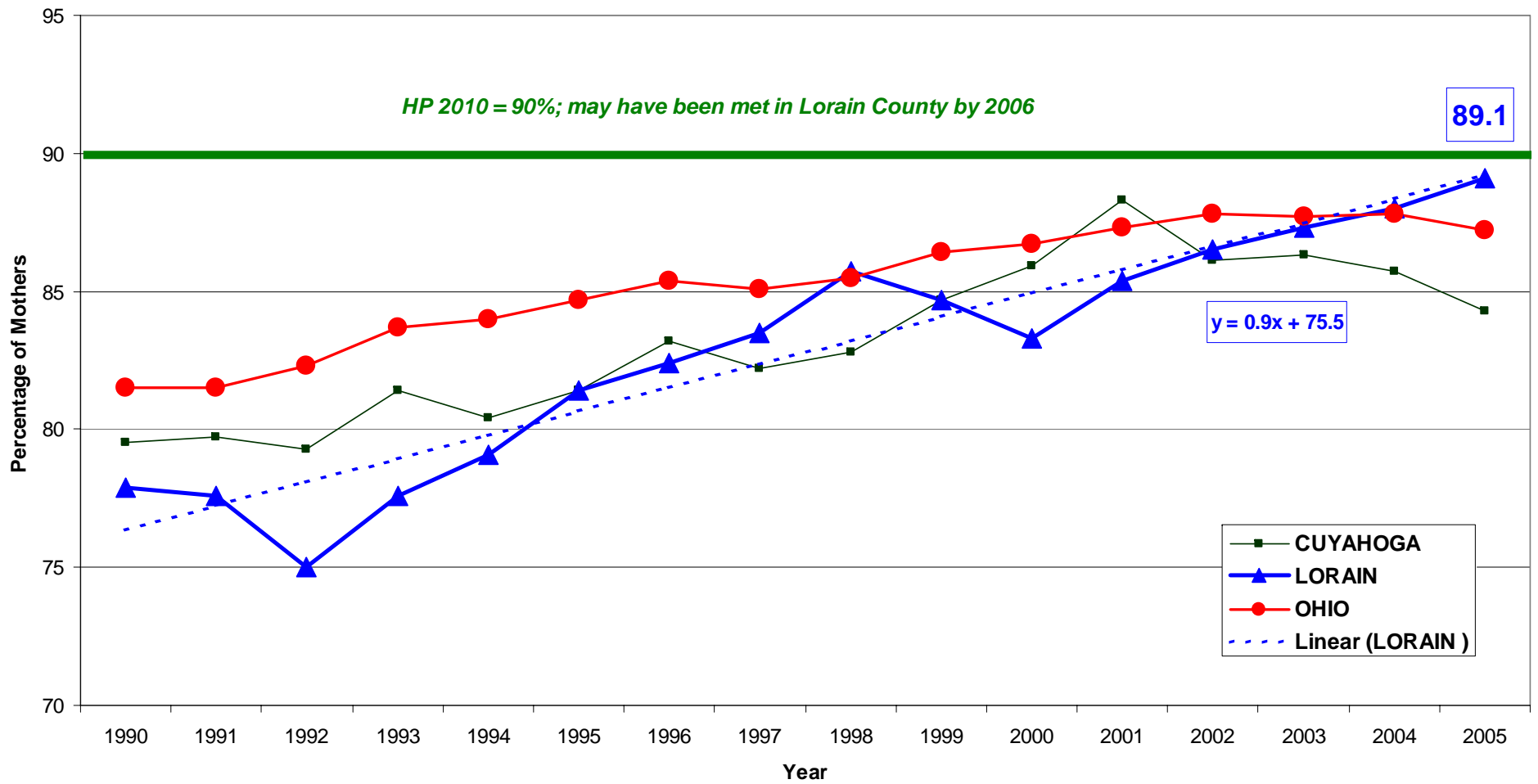
Percentage Omitting Prenatal Care



Adequacy of Prenatal Care



First Trimester Entry to Prenatal Care Lorain County Counters Area and Statewide Downtrends



PSI

