

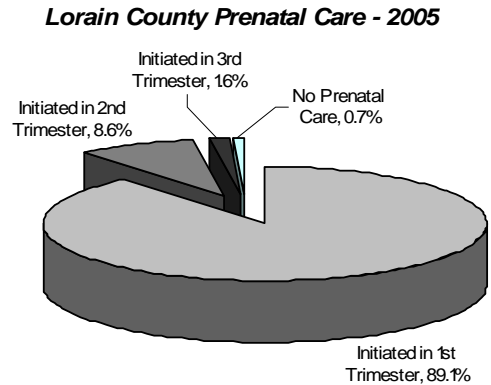
# **Child & Family Health Statistics Report**

**November 2007**

## Prenatal Care

♣ **Key Finding:** Lorain County has made steady improvement. The percentage of Lorain County mothers receiving **NO** first trimester prenatal care continued to exceed state average until 2003; however, the Lorain County's rate was lower than the state average in 2004 and 2005.

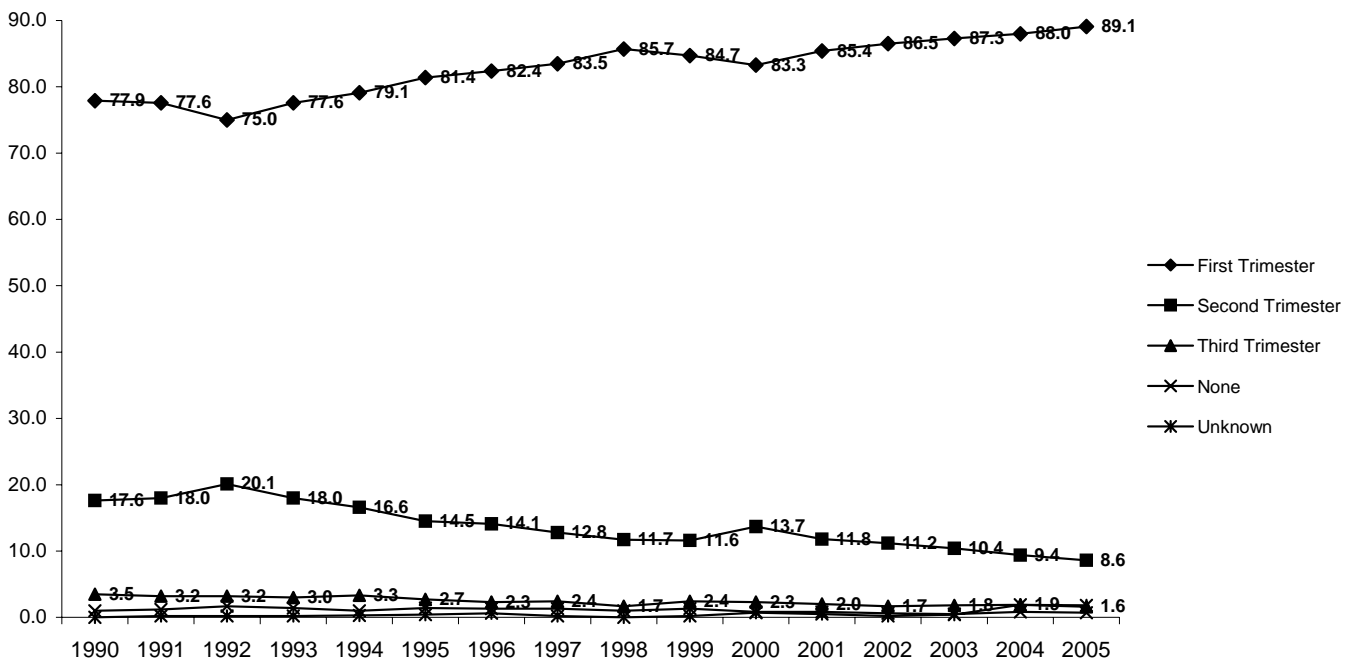
Early prenatal care is a vital component of infant and maternal health. In 2005, although nearly 89 percent of Lorain County mothers began their prenatal care during their first trimester of pregnancy, the remaining 11 percent either began their care late or received no care at all. A total of 389 mothers received no care prior to their second trimester of pregnancy. Of these, 58 began formal care during their third trimester. An additional 24 Lorain County mothers gave birth in 2005 with *no prenatal care provided at all*.



Source: Ohio Department of Health, Health Statistics

Overall, the percentages of Lorain County mothers who initiate their prenatal care late or received no prenatal care at all have gradually declined since 1990. Approximately 18 percent of all Lorain County births in 1990 involved pregnancies in which prenatal care was initiated in the second trimester. By 2005 this figure declined to 8.6 percent. For cases in which prenatal care was initiated during the 3rd trimester, Lorain County also experienced a decline, from 3.5 percent of all births in 1990 to 1.6 percent 2005. Similarly, the percentage of no prenatal care at all dropped from 1.0 percent in 1990 to 0.7 percent in 2005.

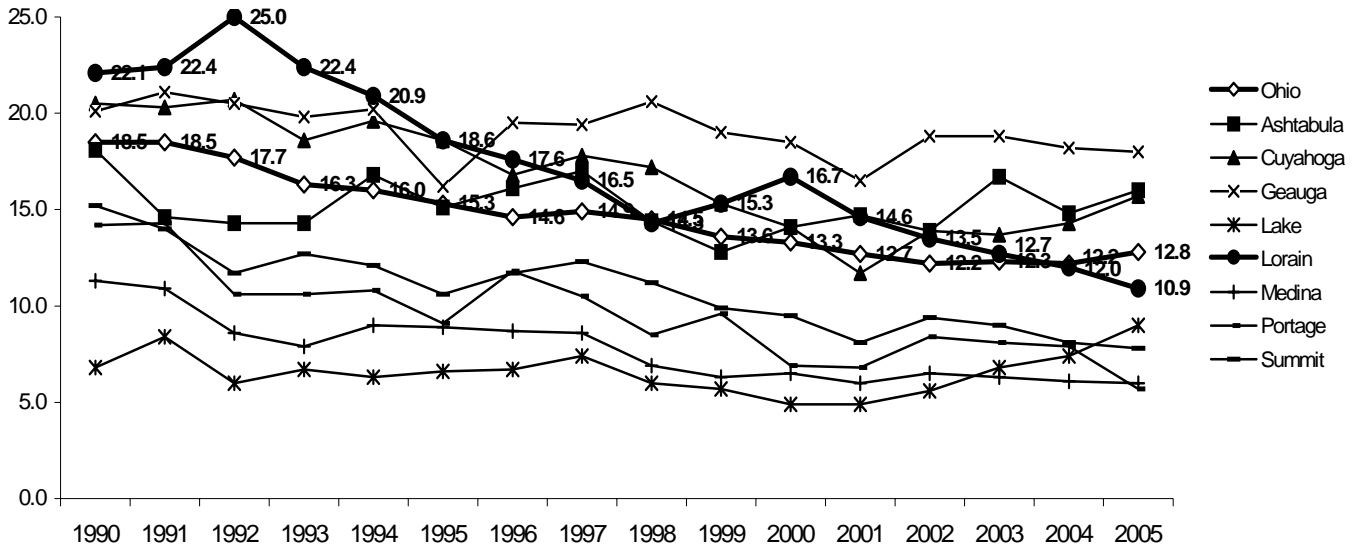
**Initiation of Prenatal Care, Lorain County**



Source: Ohio Department of Health, Health Statistics

For cases in which no prenatal care was initiated during the first trimester of pregnancy, overall, Lorain County improved steadily, declining from 22 percent of all births in 1990 to less than 11 percent in 2005. Lorain County remained consistently higher than state averages until 2003; however, the county had a lower rate than the State in 2004 and 2005. In comparing counties within the region, the percentage of Lorain County births involving no first trimester care were generally higher than most of CMSA counties.

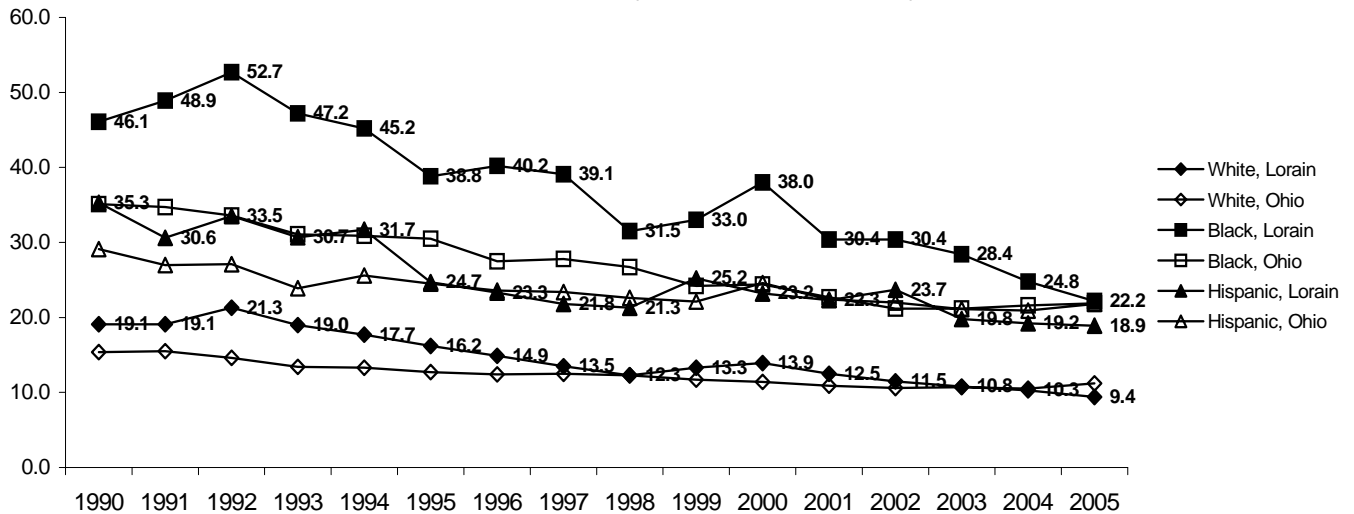
**No First Trimester Prenatal Care**



Source: Ohio Department of Health, Health Statistics

Minority mothers in Lorain County were less likely than White mothers to initiate their prenatal care during the first trimester. The percent of no first trimester prenatal care remained the highest for Lorain County African American mothers. A similar pattern was observed in Ohio. Higher percentages of no first trimester prenatal care were observed among African American and Hispanic mothers.

**No First Trimester Care by Race, Lorain County and Ohio**

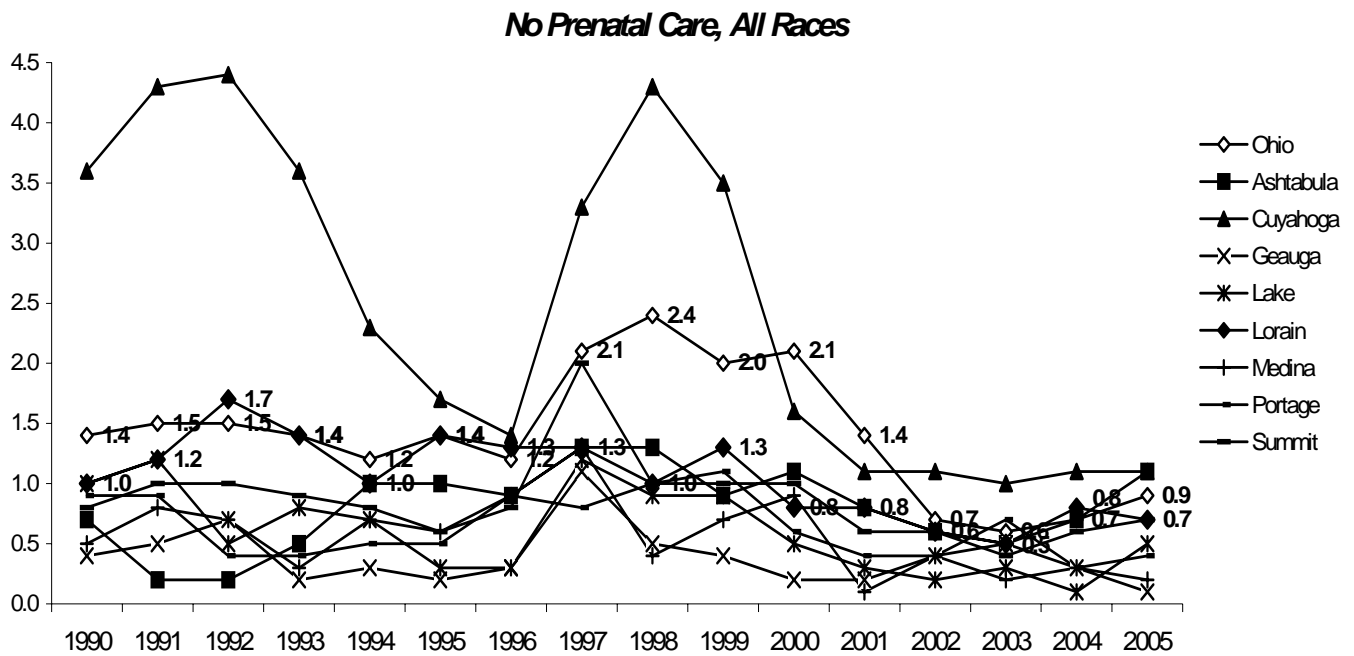


Source: Ohio Department of Health, Health Statistics

## No Prenatal Care

♣ **Key Finding:** Lorain County mothers are more likely to carry a pregnancy to term without any prenatal care than mothers in other counties of the region. In both Lorain County and Ohio African American mothers report the highest rates of no prenatal care among all racial and ethnic groups.

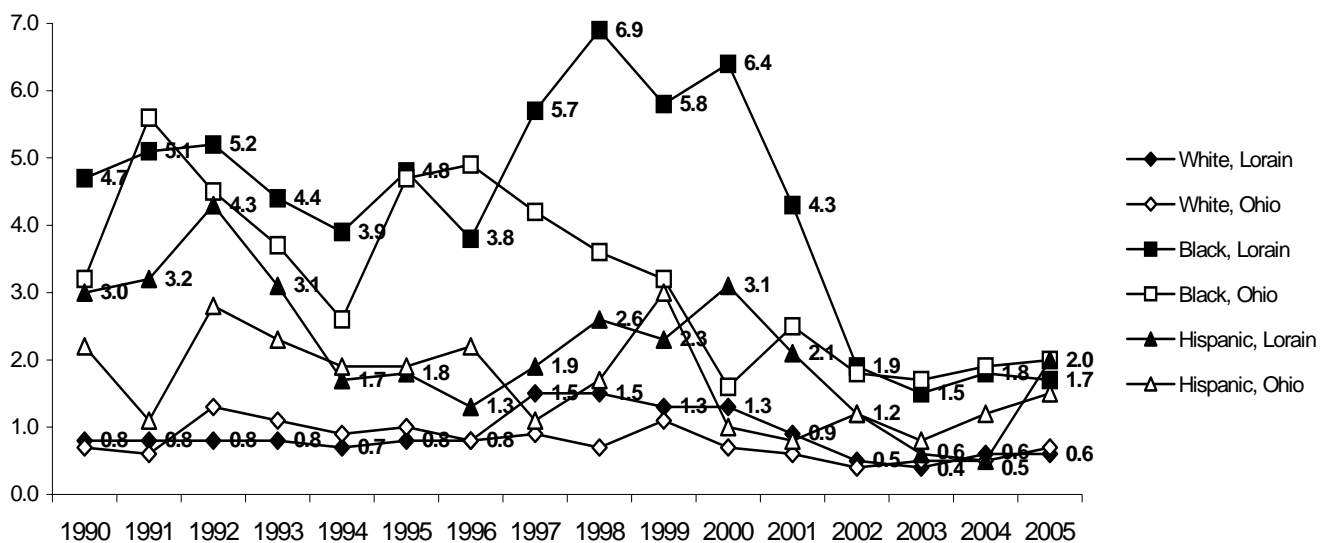
While delayed prenatal care is of serious concern, even more so are situations in which no prenatal care has been provided at all. Although the percentages are much lower than those of delayed care, in real terms they amount to significant numbers of people. Between 1990 and 2004, 630 Lorain County mothers carried to term with no prenatal care. In addition, reports from The Ohio Department of Health indicate that 28 Lorain County mothers carried to term in 2004 without having any prenatal care at all. Until the mid 1990s, Lorain County's percentages had fluctuated around Ohio averages, but had exceeded most of all counties in the CMSA. In fact, between 1990 and 1996, Lorain County had the 2nd highest incidence of all counties in the region for this indicator, after Cuyahoga County. However, the percentages of no prenatal care in Lorain County have gradually declined since 1997.



Source: Ohio Department of Health, Health Statistics

Minority mothers are more likely than White mothers to receive no prenatal care at all both in Lorain County and in Ohio. African American mothers generally indicated the highest percentage of no prenatal care among all ethnic and racial groups at the state and county levels. For instance, although the rates for the Lorain County African American population had dropped to around 2 percent after 2001, it fluctuated between 3 percent and 7 percent during the 1990s. Especially, compared to Ohio averages, exceptionally higher percentages of no prenatal care during the pregnancy were reported by the African American mothers in Lorain County between 1997 and 2001.

**No Prenatal Care by Race, Lorain County and Ohio**

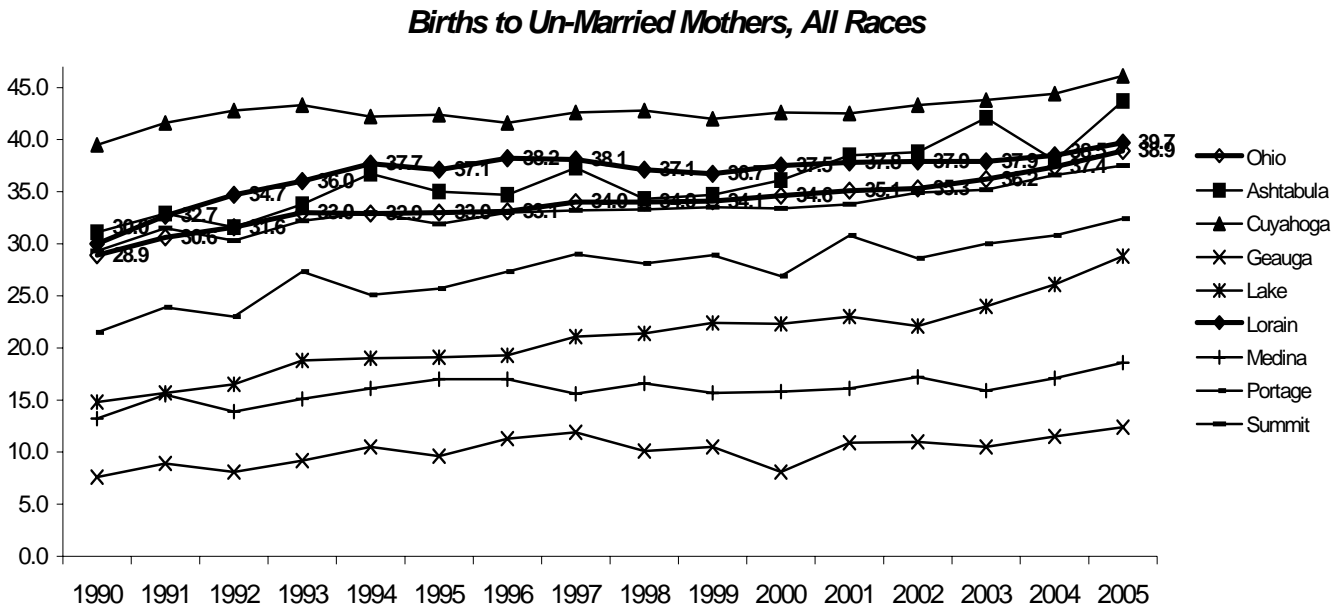


Source: Ohio Department of Health, Health Statistics

## Birth to Un-Married Mothers

♣ **Key Finding:** Births to un-married mothers in Lorain County have increased steadily and significantly, from 31 percent of all births in 1990 to 40 percent of all births in 2005 and remain consistently higher than state averages. African Americans have the highest percentage of non-marital births among all racial and ethnic groups.

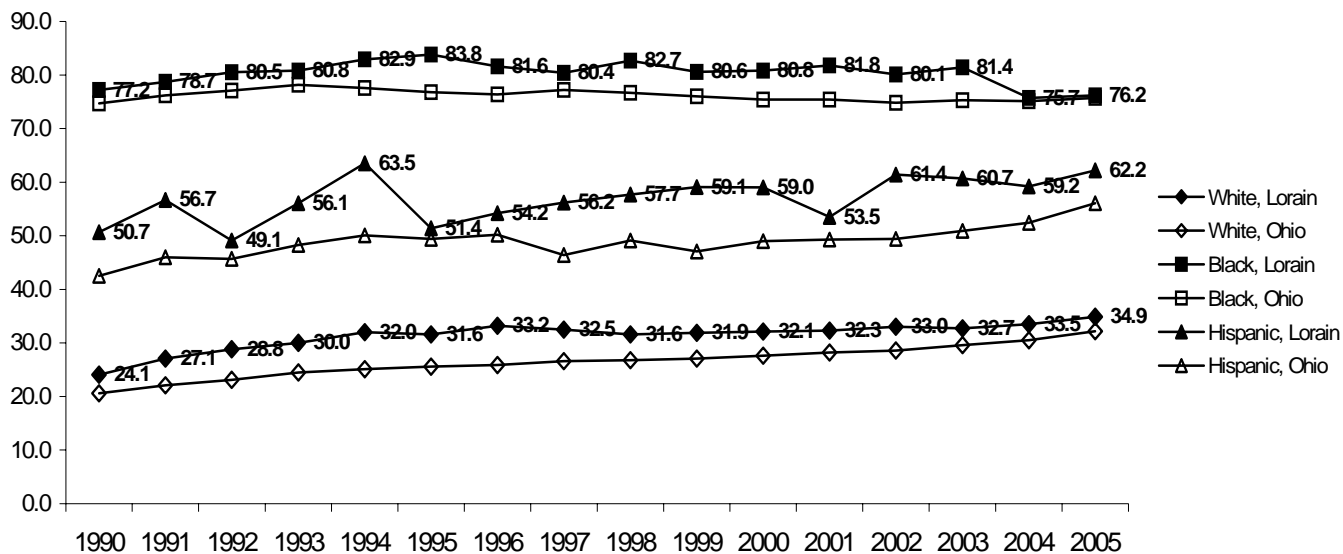
Following the state pattern, Lorain County has experienced a steady increase in births to unmarried women since 1990. Births to un-married mothers in Lorain County have remained consistently higher than regional and state averages. In fact, Lorain County ranked second after Cuyahoga County in this indicator between 1992 and 2000 and ranked third in the region in 2005. Urban counties in the region, Cuyahoga, Lorain, and Summit, share the highest incidence of non-marital births.



Source: Ohio Department of Health, Health Statistics

Racial and ethnic differences exist in the percentage of births to unmarried women, with minority women being more likely to give birth out-of-wedlock than White women. Approximately, 76 percent of African American births in Lorain County were to unmarried women in 2005. While the rates were lower than African Americans, 62 percent of all Hispanic births in the County were to unmarried mothers. Across all racial and ethnic groups, the percentages of Lorain County are consistently higher than Ohio averages.

*Birth to Un-Married Mothers by Race, Lorain County and Ohio*

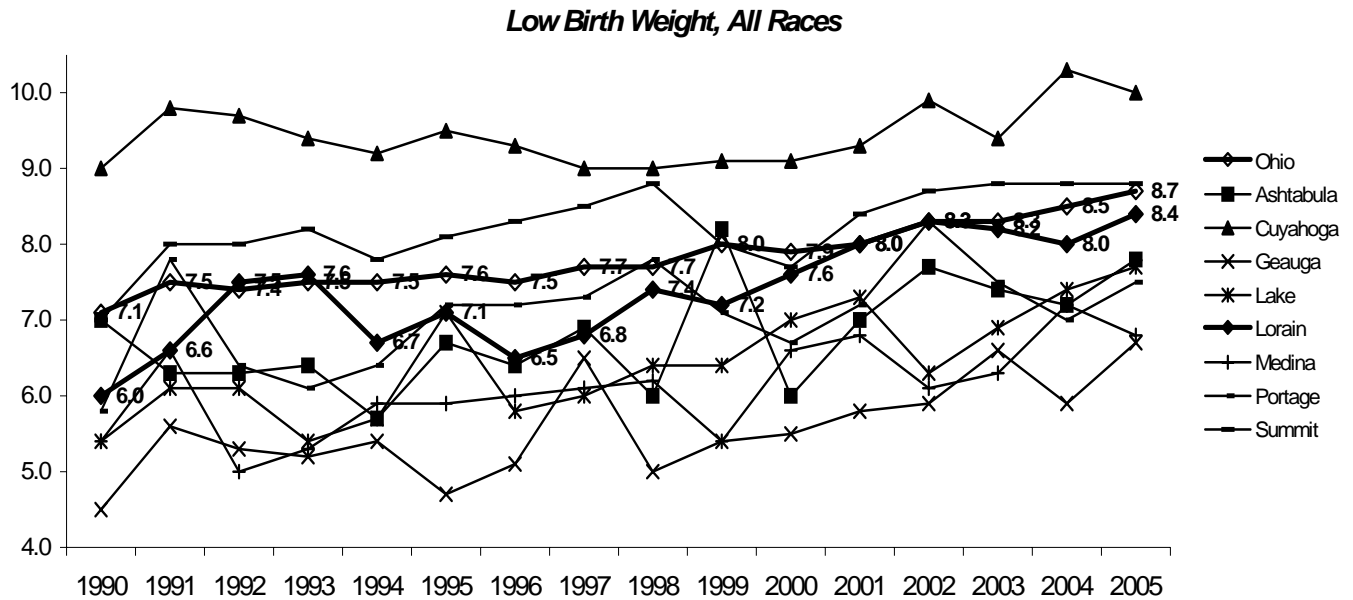


Source: Ohio Department of Health, Health Statistics

## Low Birth Weight

♣ **Key Finding:** Overall, Lorain County has had slightly lower rates of low birth weight than Ohio. However, the rate for Lorain County has steadily increased since 1990. Of all racial and ethnic groups, African Americans in Lorain County have the highest incidence of low birth weight.

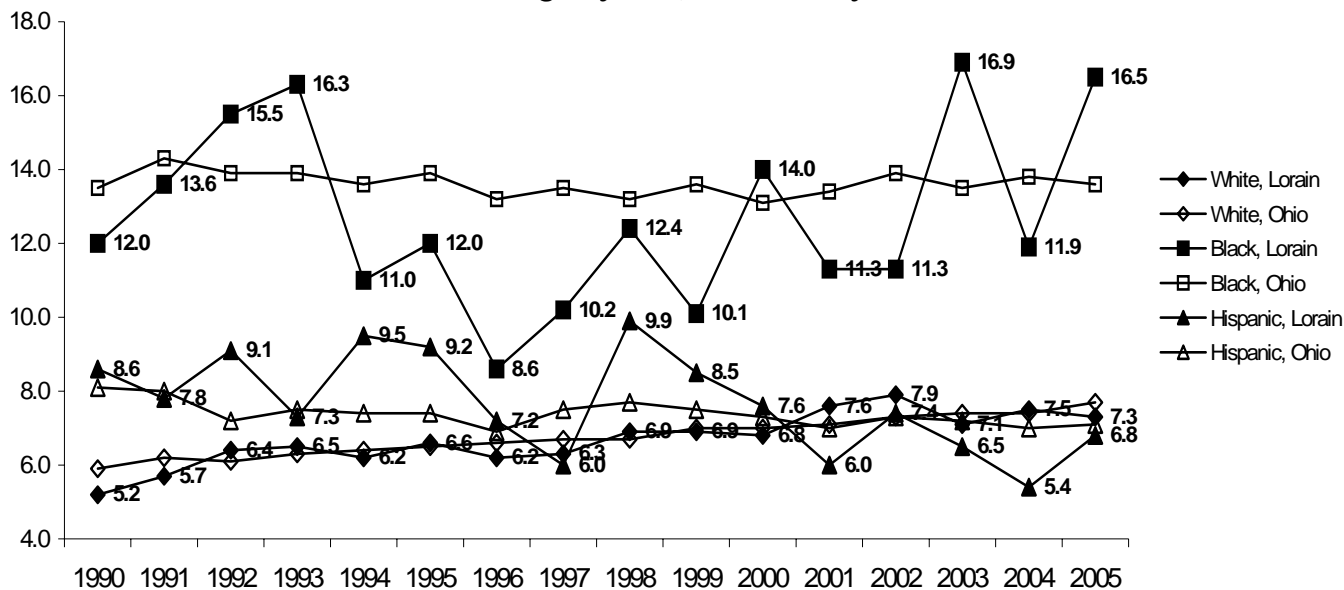
The Ohio Department of Health defines low-birth weight as a live-born infant with a weight of less than 2,500 grams (5.51 lb.). Even though the rate of low birth weight in Lorain County has fluctuated mildly several times since 1990, it has gradually increased from 6.0 percent in 1990 to 8.4 percent in 2005. A higher incidence of low birth weight is reported in the region's urban counties with higher proportion of minorities, Cuyahoga and Summit.



Source: Ohio Department of Health, Health Statistics

Both in the State of Ohio and Lorain County, the highest incidence of low birth weight is observed among African American newborns. Despite a few peaks (i.e., in 1993, 2003 and 2005) Lorain County's percentages of African American low birth weight were usually below Ohio averages and widely fluctuated around 12 percent. The percentages among Hispanic newborns in Lorain County were generally lower than those of African Americans but higher than those of White newborns until 2000; however, the rates for Hispanics have been lower than those for Whites for the past few years.

**Low Birth Weight by Race, Lorain County and Ohio**

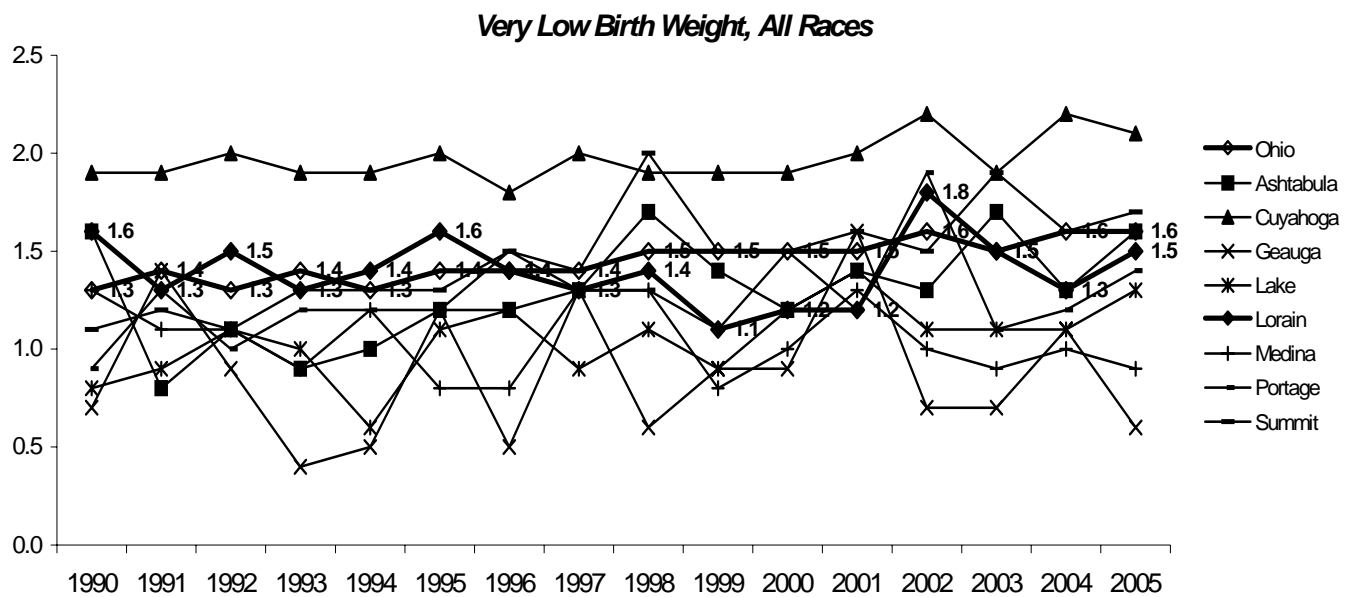


Source: Ohio Department of Health, Health Statistics

## Very Low Birth Weight

♣ **Key Finding:** *The incidence of very low birth weight (less than 1500 grams) in Lorain County has fluctuated around state averages since 1990. In general, Lorain County's minority populations have higher incidence of very low birth weight than White populations.*

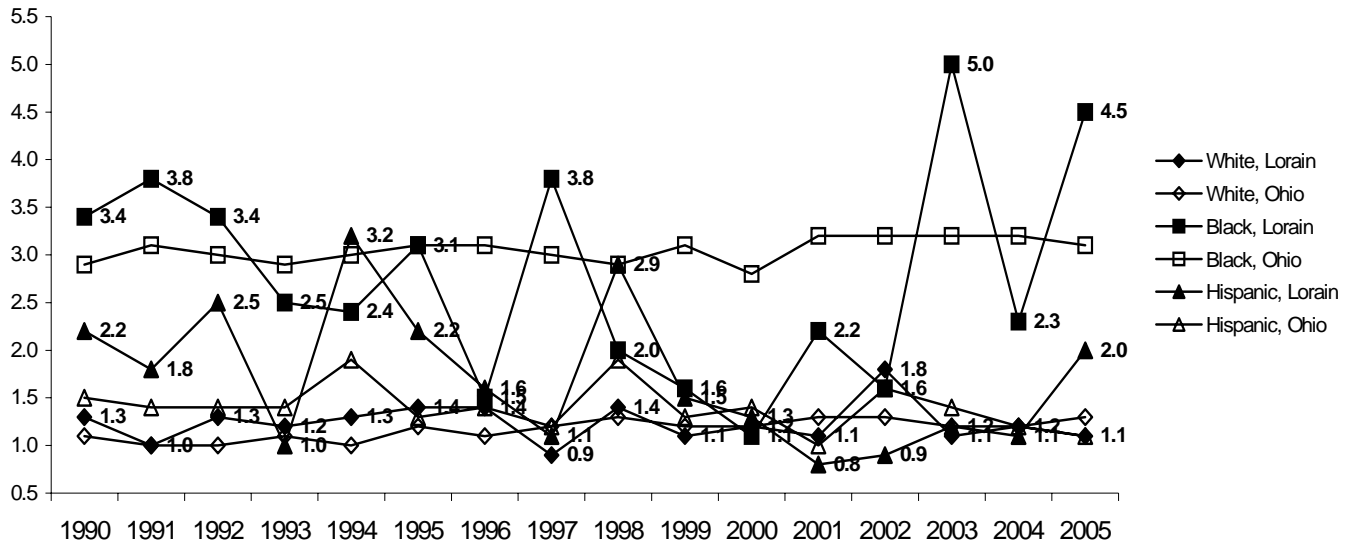
The incidence of very low birth weight in Lorain County has fluctuated around state averages. Although the rates for Lorain County have constantly remained lower than that of Cuyahoga County (the region's largest urban area), they are generally higher than those of the non-urban counties in the region.



Source: Ohio Department of Health, Health Statistics

A higher incidence of very low birth weight has been reported among racial and ethnic minorities both in Ohio and Lorain County. African Americans have the highest rates of very low weight births at the state and county levels, although the county's rates fluctuate sharply due to small number of reported cases. The rates for persons of Hispanic origin have steadily declined since 1990 and have remained around 1 percent between 2000 and 2004.

**Very Low Birth Weight by Race, Lorain County and Ohio**



Source: Ohio Department of Health, Health Statistics

### Preterm Birth (PTB)

♣ **Key Finding:** In 2003 about one in every seven infants (14.3%) in Lorain County were born before 37 weeks' gestation which was lower than the state average (16.7%).

A premature infant is any infant born before 37 weeks gestation. Preterm birth is the major cause of neonatal death, and has an incidence rate of 12.5 percent in the United States. Lorain County's rate of 14.3% was the 3<sup>rd</sup> lowest among 8 counties in the region.

Percent of Infants Born Before 37 Weeks Gestation	
<b>Ohio</b>	<b>16.7%</b>
Summit	19.3%
Cuyahoga	17.6%
Ashtabula	16.0%
Medina	15.9%
Lake	14.5%
<b>Lorain</b>	<b>14.3%</b>
Portage	13.9%
Geauga	12.1%

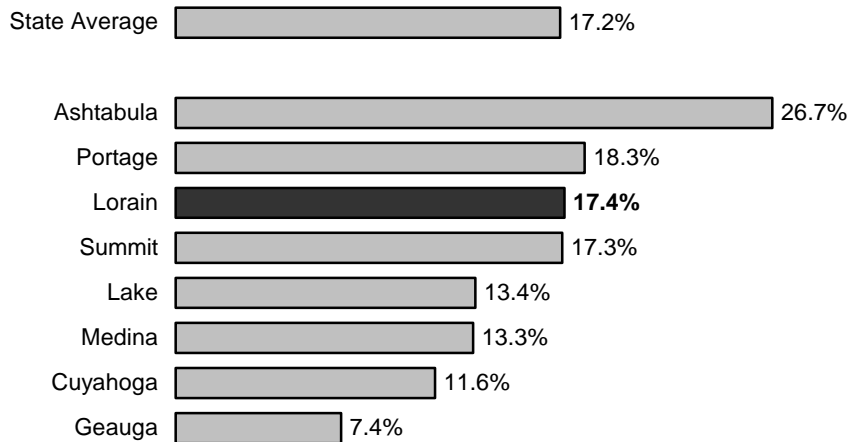
Source: Ohio Department of Health, Ohio Vital Statistics

## Cigarette Smoking During Pregnancy

♣ **Key Finding:** In 2003, the percentage of births to mothers who smoked during pregnancy was 17.4 percent in Lorain County, which was similar to the state average (17.2%).

About one in every six Lorain County mothers smoked during pregnancy. Lorain County had the 3<sup>rd</sup> highest rate among 8 counties in the region, behind Ashtabula (26.7%) and Portage (18.3%) County.

### Smoking During Pregnancy



Source: Ohio Department of Health, Ohio Vital Statistics

## Mothers with High School Diploma or Higher

♣ **Key Finding:** In 2003, the percentage of live births to mothers who had at least a high school diploma was 84.0 percent in Lorain County, which was slightly higher than the state average (82.9%).

Lorain County had the 5<sup>th</sup> highest rate among 8 counties in the region.

	<b>Percent of Infants Born to Mothers with at Least High School Diploma</b>
<b>Ohio</b>	<b>82.9%</b>
Medina	93.6%
Portage	88.9%
Summit	87.5%
Lake	86.9%
<b>Lorain</b>	<b>84.0%</b>
Cuyahoga	83.1%
Ashtabula	76.7%
Geauga	71.5%

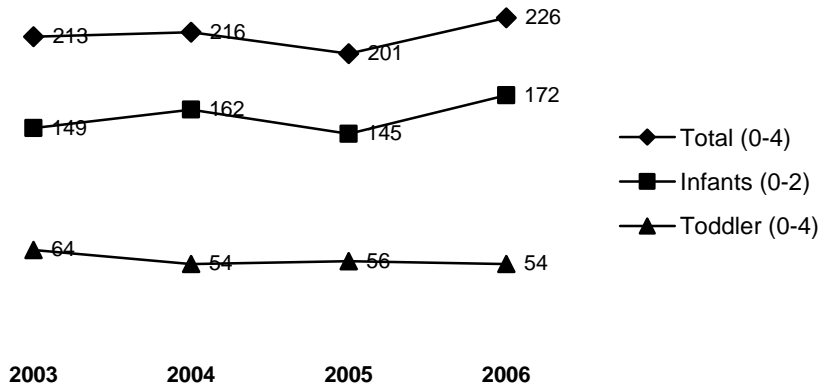
Source: Ohio Department of Health, Ohio Vital Statistics

## Infant and Toddler Abuse, Neglect and Maltreatment

### Infant and Toddler Abuse and Neglect

♣ **Key Finding:** The total number of substantiated cases of infant and toddler abuse and neglect in Lorain County was 226 in 2006 which was slightly higher than the number of cases reported annually between 2003 and 2005.

Number of Infant and Toddler Abuse and Neglect Cases Substantiated, 2003-2006

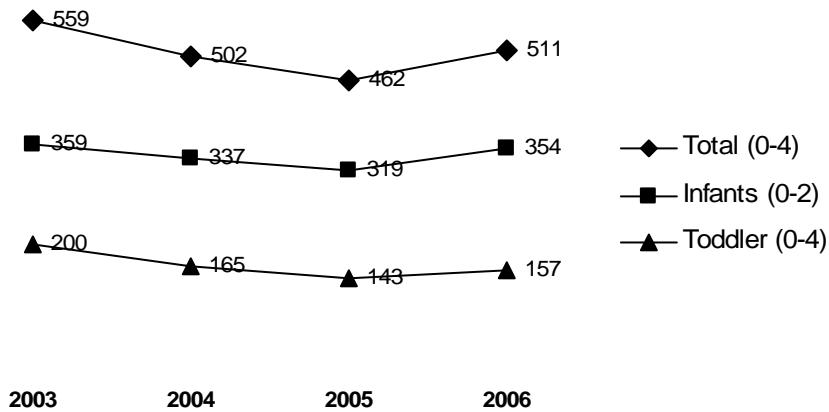


Source: Lorain County Children Services

### Infant and Toddler Maltreatment

♣ **Key Finding:** A total of 511 infant and toddler maltreatment cases were reported by Lorain County Children Services in 2006 which represents a decrease since 2003.

Number of Infant and Toddler Maltreatments, 2003-2006



Source: Lorain County Children Services

**Child Abuse and Neglect (Children under 18)**

*♣ Key Finding: Over 1,400 cases of child abuse and neglect (265 sexual abuse, 527 physical abuse, and 614 neglect reports) were reported by Lorain County Children Services in 2005 representing an increase in cases over the last couple of years.*

**Child Abuse and Neglect Investigations, Children Under 18**

		2005	2004	2003	2002	1999	1998	1997
Abuse	Total	792	857	759	613	430	513	571
	Sexual	265	277	226	212	143	219	236
	Physical	527	580	533	401	287	294	335
Neglect		614	618	612	403	443	485	613

Source: Lorain County Children Services

**Child Abuse and Neglect (Regional Data)**

*♣ Key Finding: Lorain County had the second largest number of allegedly abused and neglected children among eight counties in the region.*

According to the Ohio Department of Job and Family Services, a total of 698 Lorain County children had allegations of abuse and neglect in their home in 2002. Lorain County had the third largest number of abused and neglected children among eight counties in the region behind Cuyahoga (9,528 children) and Summit (1,176 children) County.

**Number of Children Who Had Allegations of Abuse and Neglect**

County	Number of Allegedly Abused and Neglected Children		
	Total	African American	All Other Races
Cuyahoga	9,528	5,755	3,773
Summit	1,176	463	713
Lorain	698	131	567
Portage	575	56	519
Lake	510	47	463
Medina	315	NA	NA
Ashtabula	272	23	249
Huron	218	NA	NA
Geauga	198	NA	NA

Source: Ohio Department of Job and Family Services, 2002

## Poverty & Health Insurance

### Proportion of all Children Under Age 18 Living in Poverty

♣ *Key Finding: In 2000, about 13 percent of all Lorain County children under age 18 were living in poverty, which was 4<sup>th</sup> highest among 8 counties in the region.*

	2005	2000	1990
<b>State Average</b>	<b>18.2%</b>	<b>14.0%</b>	<b>17.6%</b>
Cuyahoga	25.1%	19.4%	21.4%
Ashtabula	23.3%	17.1%	23.5%
Summit	14.4%	14.0%	17.9%
<b>Lorain</b>	<b>17.3%</b>	<b>12.9%</b>	<b>17.1%</b>
Portage	15.5%	9.9%	13.1%
Lake	12.9%	6.5%	7.0%
Geauga	Not Available Yet	6.1%	8.4%
Medina	6.6%	5.9%	7.6%

Source: U.S. Bureau of Census, Census 1990 & 2000 and 2005 American Community Survey

### Proportion of Families with Children under Age 18 Living in Poverty

♣ *Key Finding: Approximately 11 percent of Lorain County families with children under age 18 were living in poverty in 2000, which was 4<sup>th</sup> highest among 8 counties in the region.*

	2005	2000	1990
<b>State Average</b>	<b>16.0%</b>	<b>12.2%</b>	<b>15.2%</b>
Cuyahoga	21.8%	16.2%	18.5%
Ashtabula	22.2%	14.5%	20.2%
Summit	13.4%	12.2%	16.2%
<b>Lorain</b>	<b>15.4%</b>	<b>10.9%</b>	<b>14.3%</b>
Portage	14.1%	9.5%	11.9%
Lake	12.1%	6.0%	5.9%
Medina	Not Available Yet	5.2%	6.5%
Geauga	Not Available Yet	4.3%	6.1%

Source: U.S. Bureau of Census, Census 1990 & 2000 and 2005 American Community Survey

**Proportion of Families with Children under Age 5 Living in Poverty**

**♣ Key Finding:** *Approximately 16 percent of Lorain County families with preschool age children were living in poverty in 2005, which was the 4th highest poverty rate among all 8 counties in the region.*

	<b>2005</b>	<b>2000</b>	<b>1990</b>
<b>State Average</b>	<b>19.9%</b>	<b>16.1%</b>	<b>19.3%</b>
Cuyahoga	20.3%	21.1%	22.3%
Ashtabula	25.4%	18.3%	27.8%
Summit	20.4%	15.9%	20.1%
<b>Lorain</b>	<b>15.6%</b>	<b>15.6%</b>	<b>18.3%</b>
Portage	4.0%	11.8%	14.5%
Lake	27.0%	9.3%	7.8%
Medina	Not Available Yet	7.4%	6.9%
Geauga	Not Available Yet	6.3%	8.7%

Source: U.S. Bureau of Census, Census 1990 & 2000 and 2005 American Community Survey

**Preschool Age Children Living in Families with Health Insurance**

**♣ Key Finding:** *Approximately 96% of all Lorain County families with preschool age children under 5 had health care insurance, which is better than both Cuyahoga (91%) and Summit (85%) counties, the other two urban areas of the 8 county region.*

	<b>Percent of Infants Born to Mothers with at Least High School Diploma</b>
<b>Ohio</b>	<b>85.1%</b>
<b>Lorain</b>	<b>95.9%</b>
Cuyahoga	91.0%
Summit	85.3%
Data for the other counties in the region are not available due to the small sample size.	

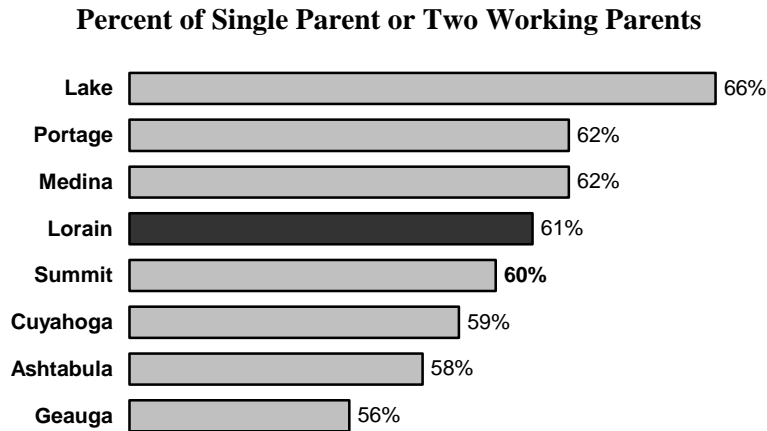
Source: Ohio Department of Health, 2004 Ohio Family Health Survey

[Additional Data \(Updates are not available\)](#)

**Family Care**

**Percent of Single Parent or Two Working Parents**

♣ *Key Finding: Over sixty percent (61%) of all children in Lorain County live in households headed by either a single parent or two working parents. Lorain County ranked 4<sup>th</sup> highest among 8 counties in the region.*

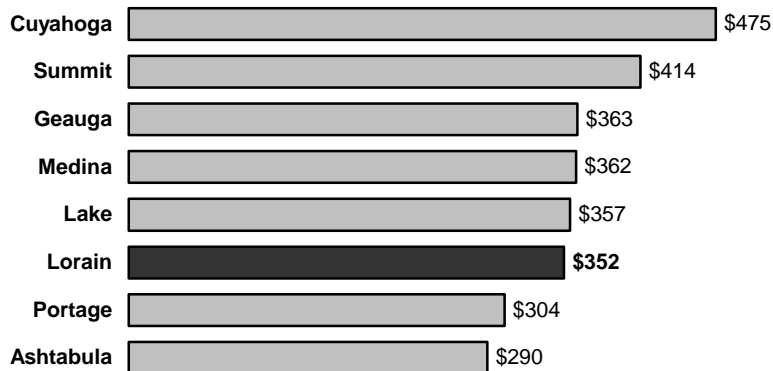


Source: Children's Defense Fund - Ohio, 1998

**Average Weekly Wage of Single or Two-Working Parent Households**

♣ *Key Finding: Average weekly wage for single or two-working parent households in Lorain County was \$352 which was the 3<sup>rd</sup> lowest (or worst) in the 8 county region.*

**Average Weekly Wage of Single or Two-Working Parent Households**



Source: Children's Defense Fund - Ohio, 1998

## Child Care Costs

♣ *Key Finding: Single parent or two-working parents in Lorain County spend 24 percent of their weekly wage on child care which is third lowest or best in the region.*

County	Weekly Child Care Cost for One Preschool Child	County	Percent of Weekly Wages
Geauga	\$101	Ashtabula	30%
Medina	\$94	Portage	30%
Summit	\$93	Geauga	28%
Portage	\$92	Medina	26%
Lake	\$89	Lake	25%
Cuyahoga	\$89	<b>Lorain</b>	<b>24%</b>
Ashtabula	\$87	Summit	22%
<b>Lorain</b>	<b>\$85</b>	Cuyahoga	19%

Source: Children's Defense Fund - Ohio, 1998