

Lorain County Child and Family Health Services: Community Health Indicators 2010 Update



Public Services Institute /
Joint Center for Policy Research
Lorain County Community College
Jeffrey K. Lange, Ph.D.
May 2010

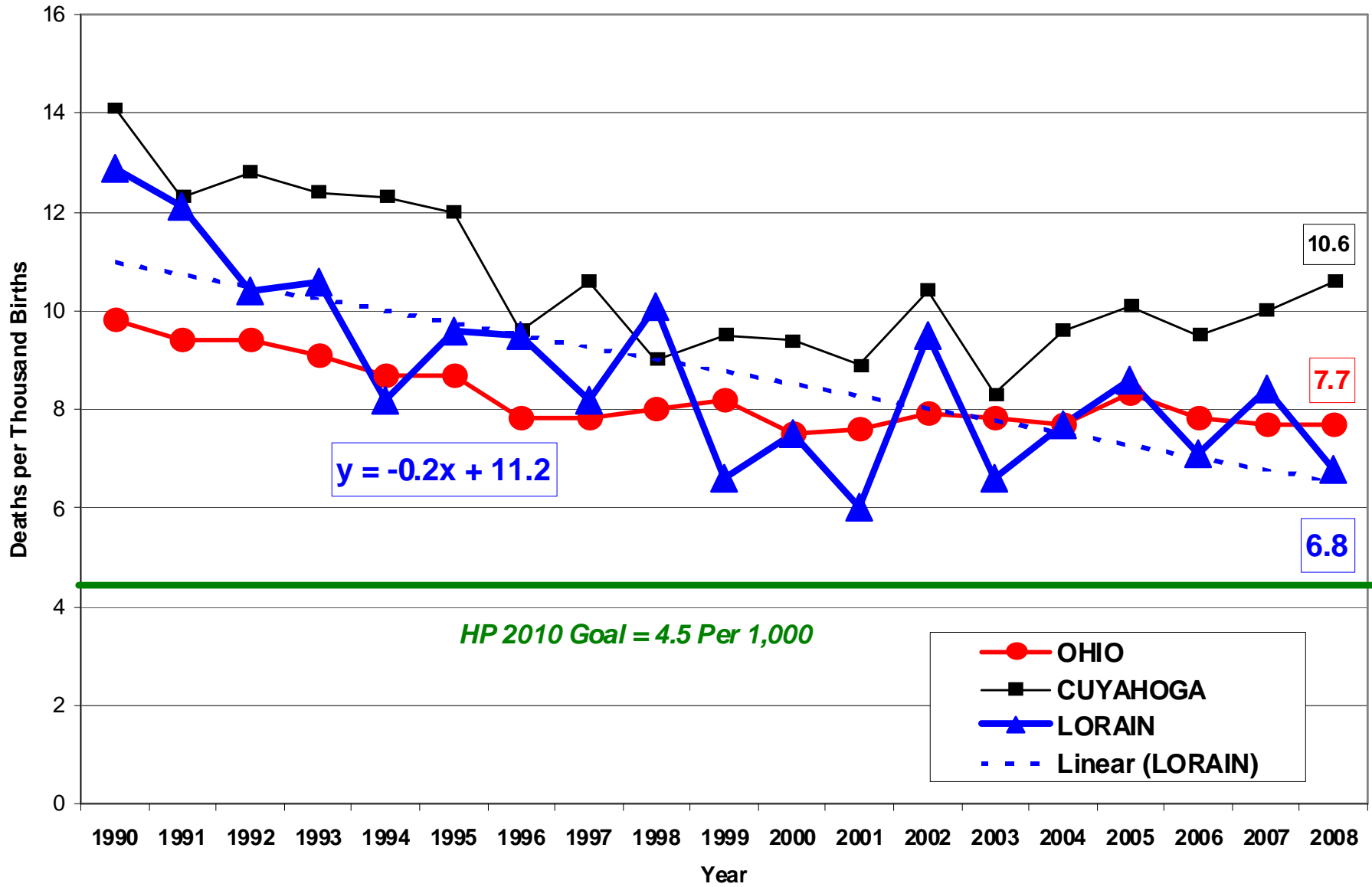


Elyria City
Health District



LORAIN CITY
HEALTH DEPARTMENT

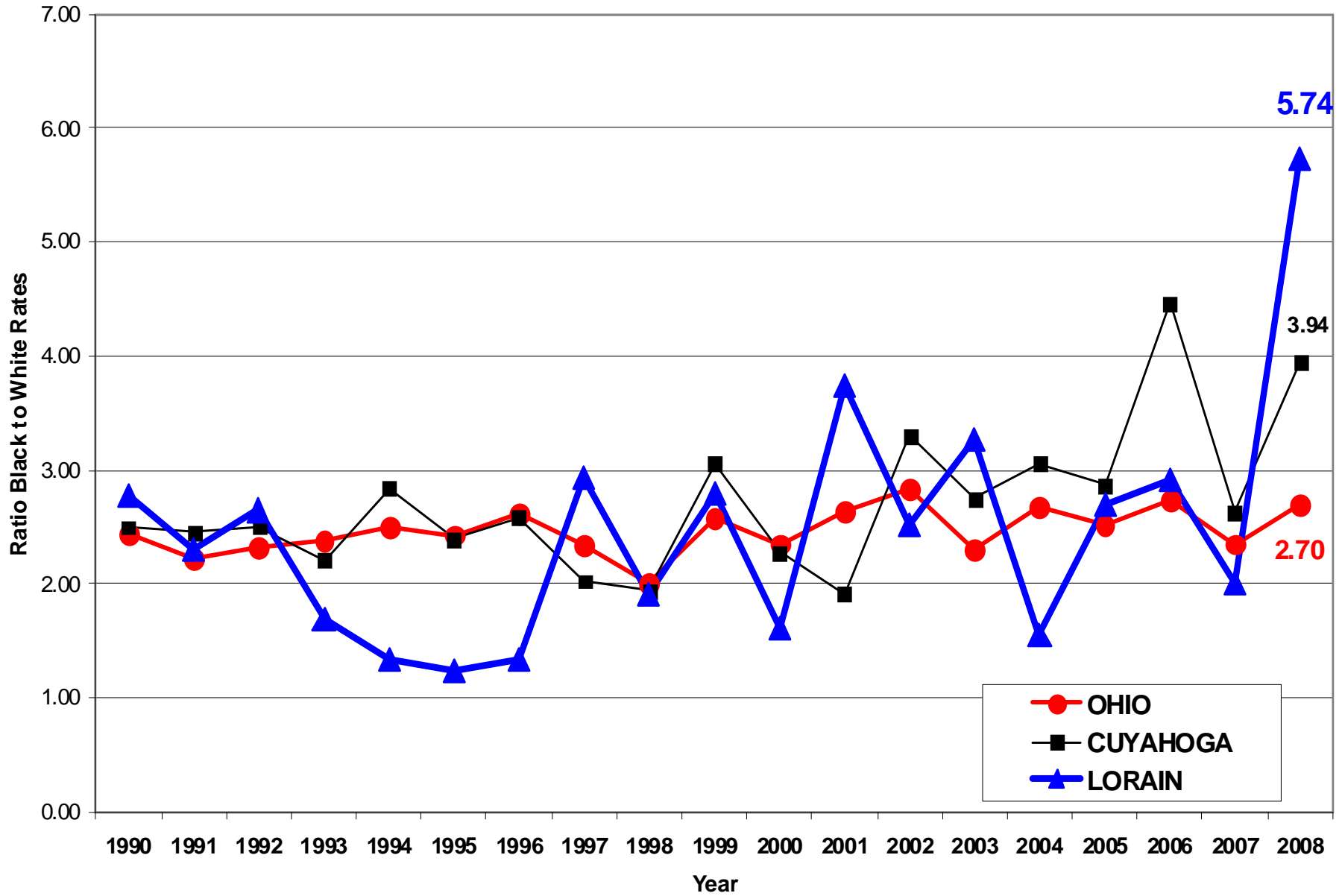
Infant Mortality Rate 1990 to 2008



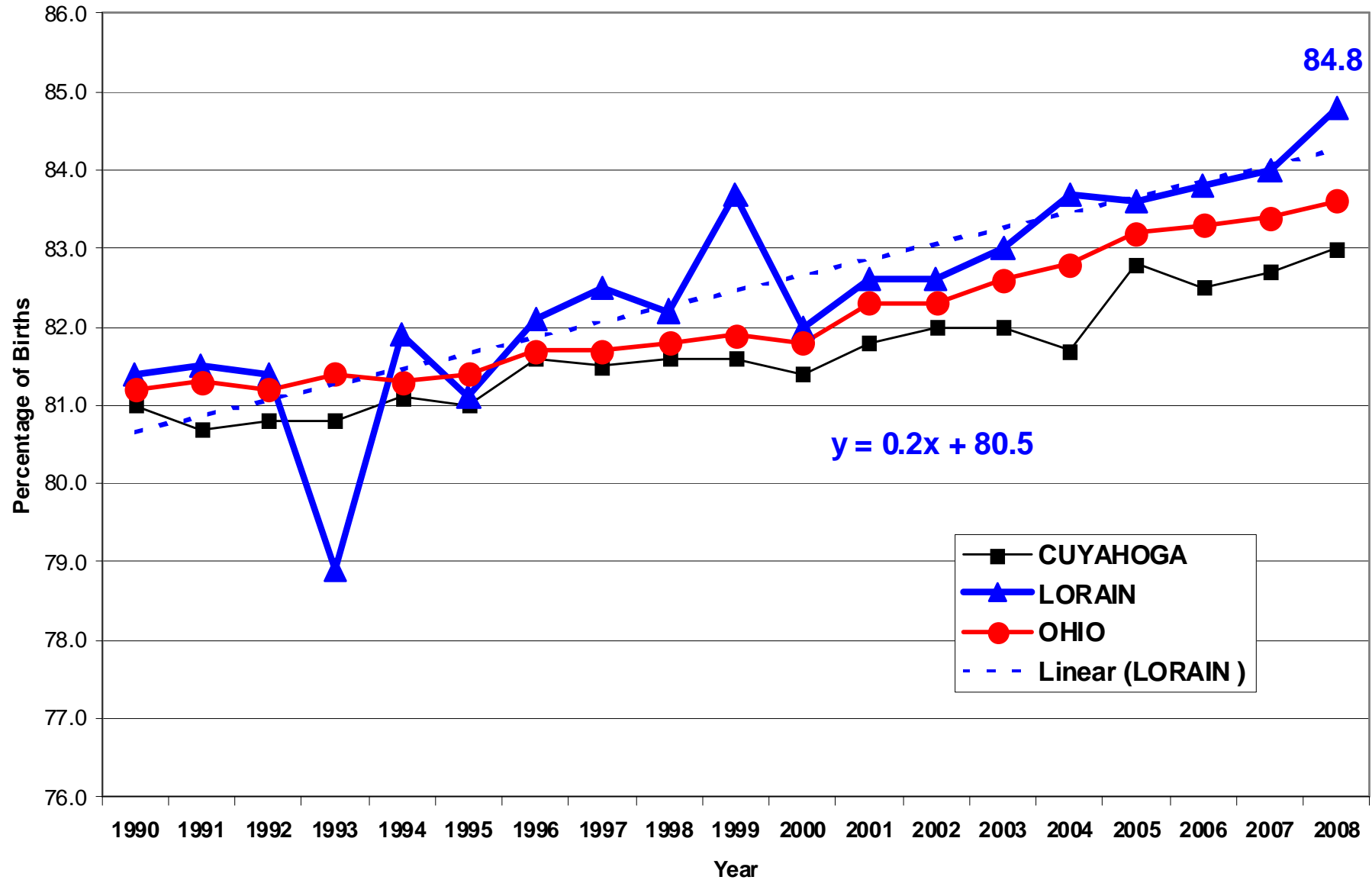
Infant Mortality Rate Comparisons (per thousand live births) 2008

| Race | Lorain | Ohio | Cuyahoga | Hispanic Status | Lorain | Ohio | Cuyahoga |
|-------|--------|------|----------|-----------------|--------|------|----------|
| Black | 24.1 | 16.2 | 19.3 | Hispanic | 9.0 | 6.1 | 9.6 |
| White | 4.2 | 6.0 | 4.9 | Non-Hispanic | 6.5 | 7.8 | 10.7 |

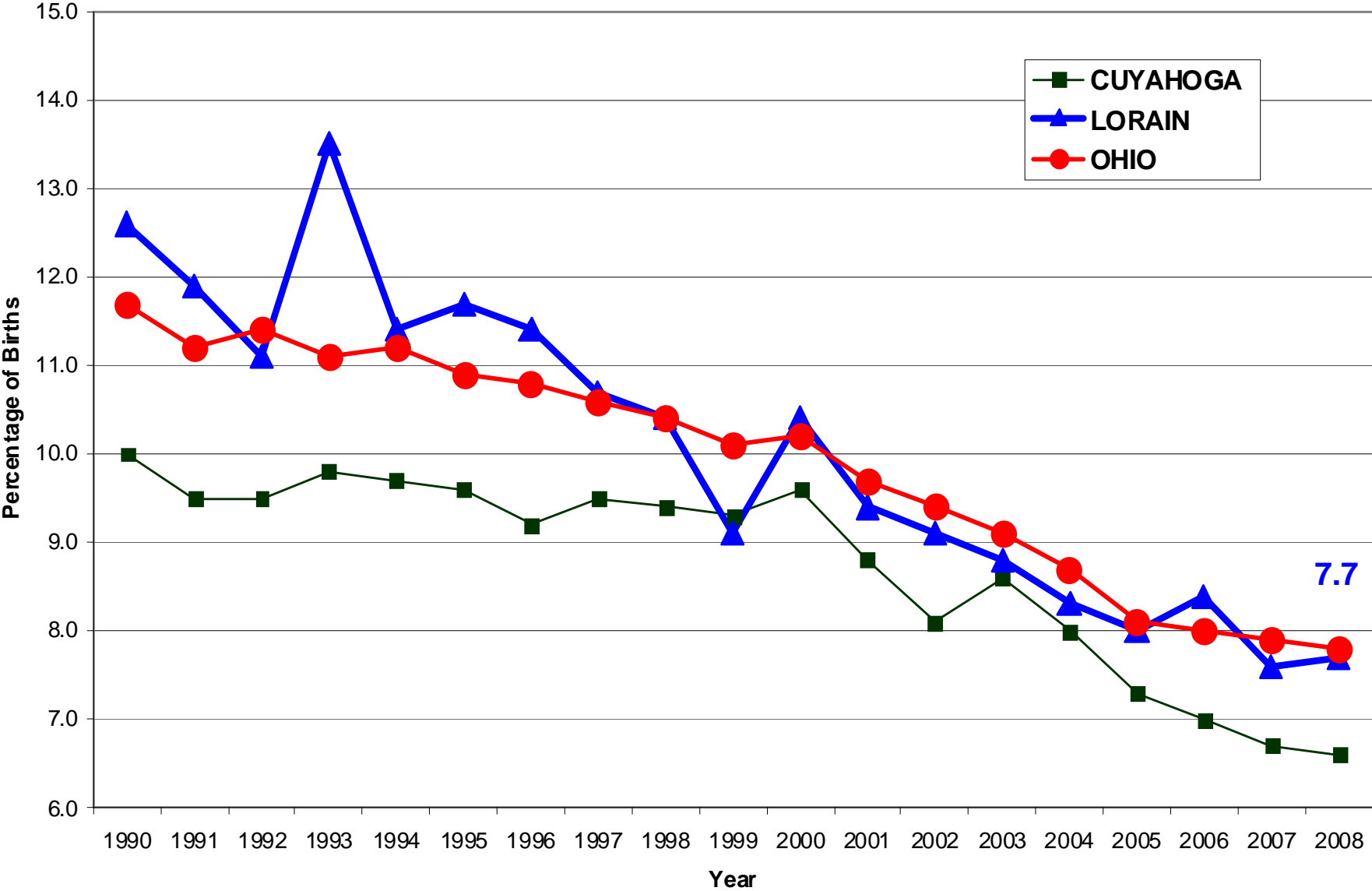
Black to White Ratio -- Infant Mortality Rate 1990 to 2008



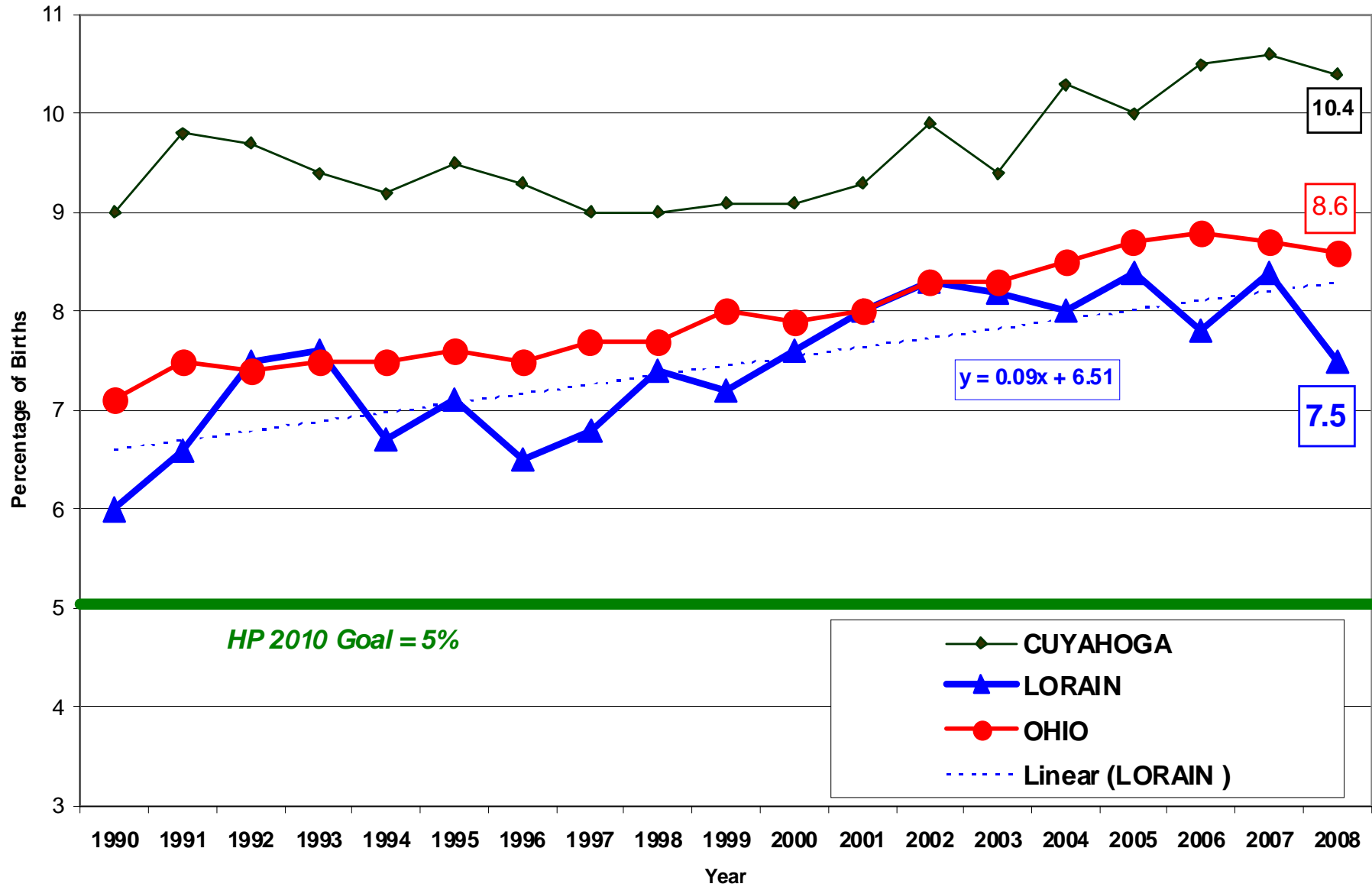
Percentage Normal Birth Weight 1990 to 2008
(2500 to 3999 grams)



Percentage High Birthweights 4000+ Grams



Low Birthweights (Less than 2500 grams)

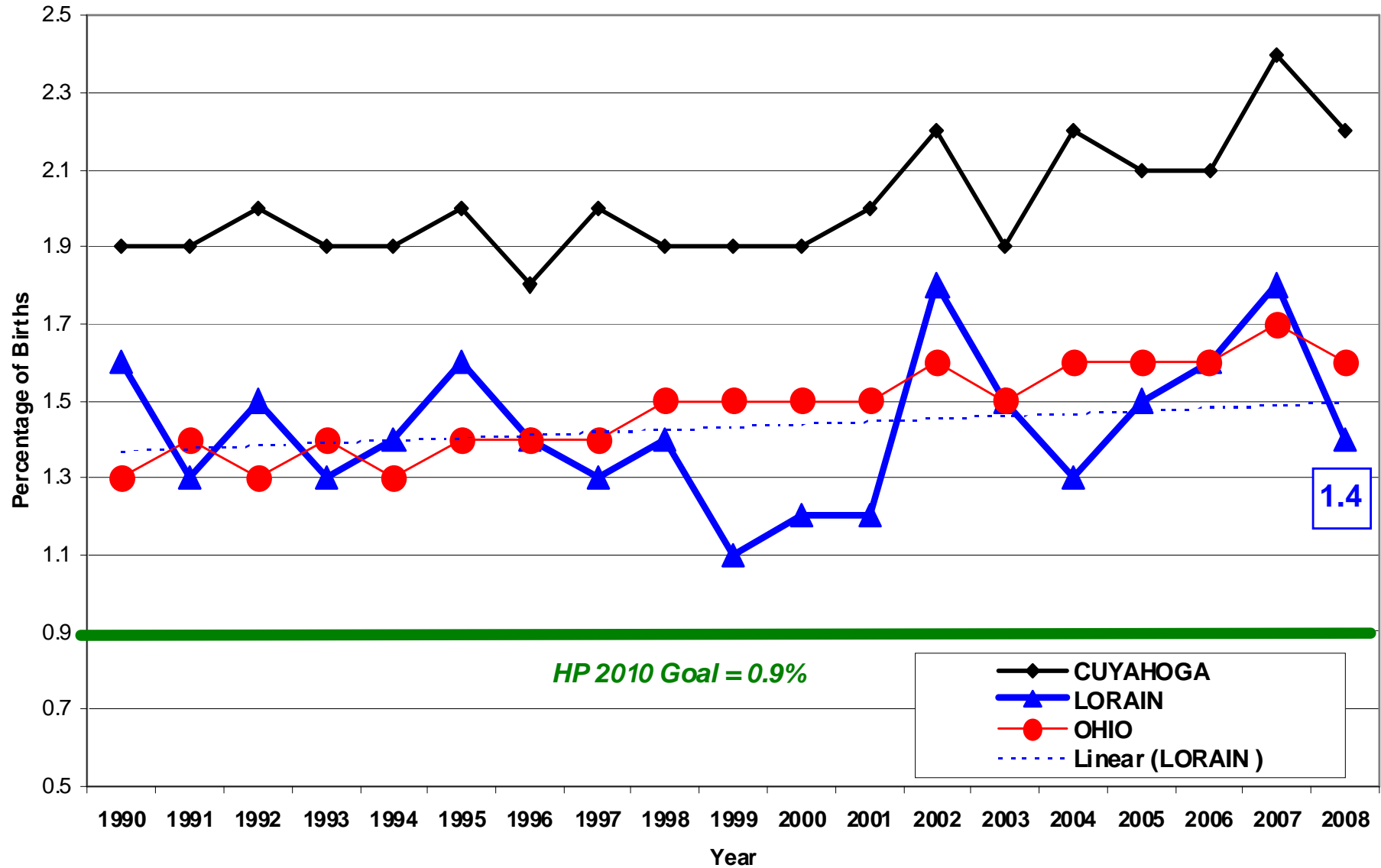


Low Birthweight Comparisons 2008

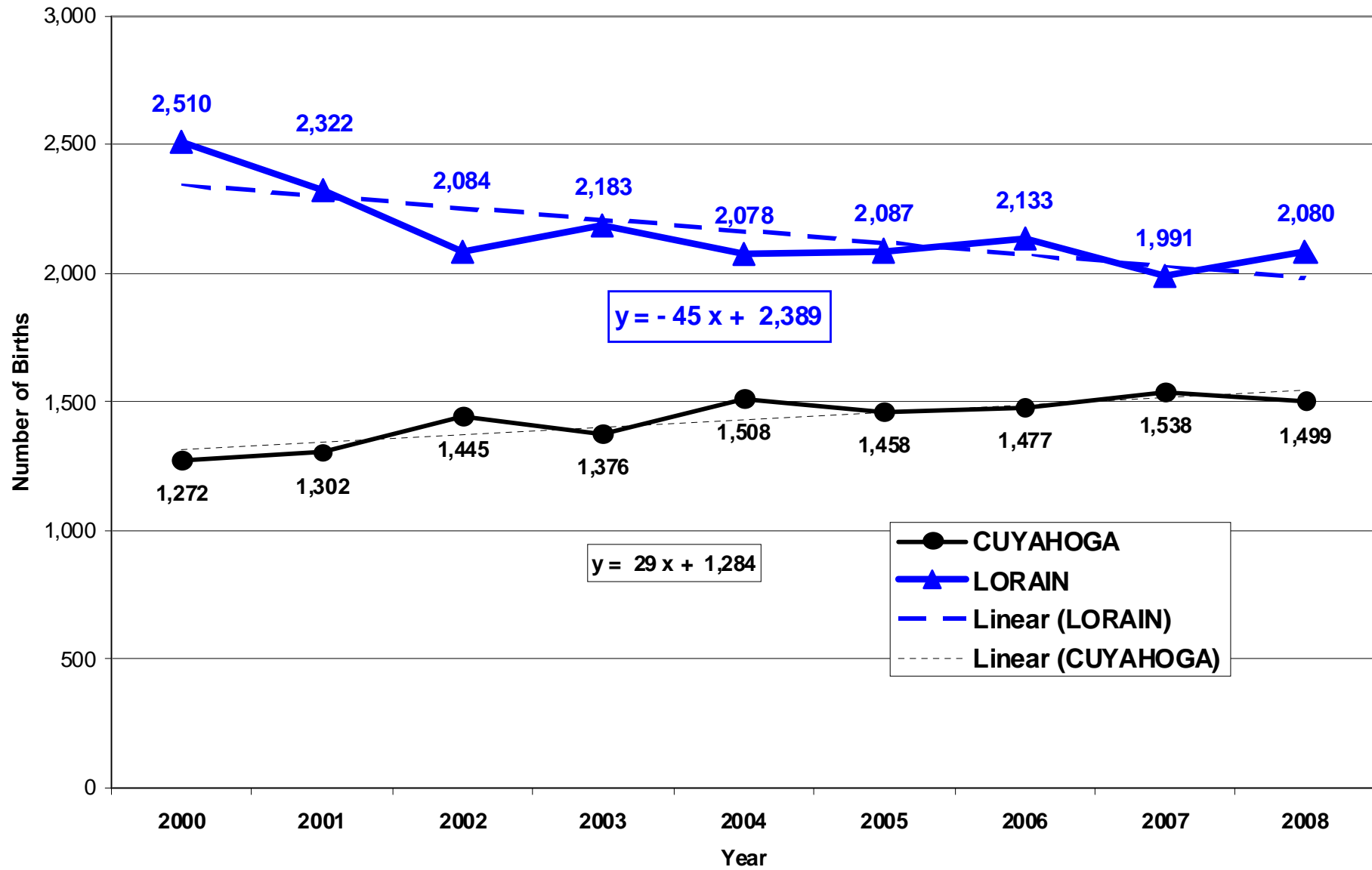
Lorain County

| Race | Percentage | Hispanic Status | Percentage | Age Group | Percentage |
|-------|------------|-----------------|------------|-----------|------------|
| | | | | LT 18 | 6.0% |
| | | | | 18 – 19 | 8.7% |
| Black | 10.1% | Hispanic | 6.6% | 20 – 24 | 7.4% |
| | | | | 25 – 29 | 7.5% |
| | | | | 30 – 34 | 6.7% |
| White | 7.1% | Non-Hispanic | 7.6% | 35 – 39 | 7.9% |
| | | | | 40 + | 11.5% |

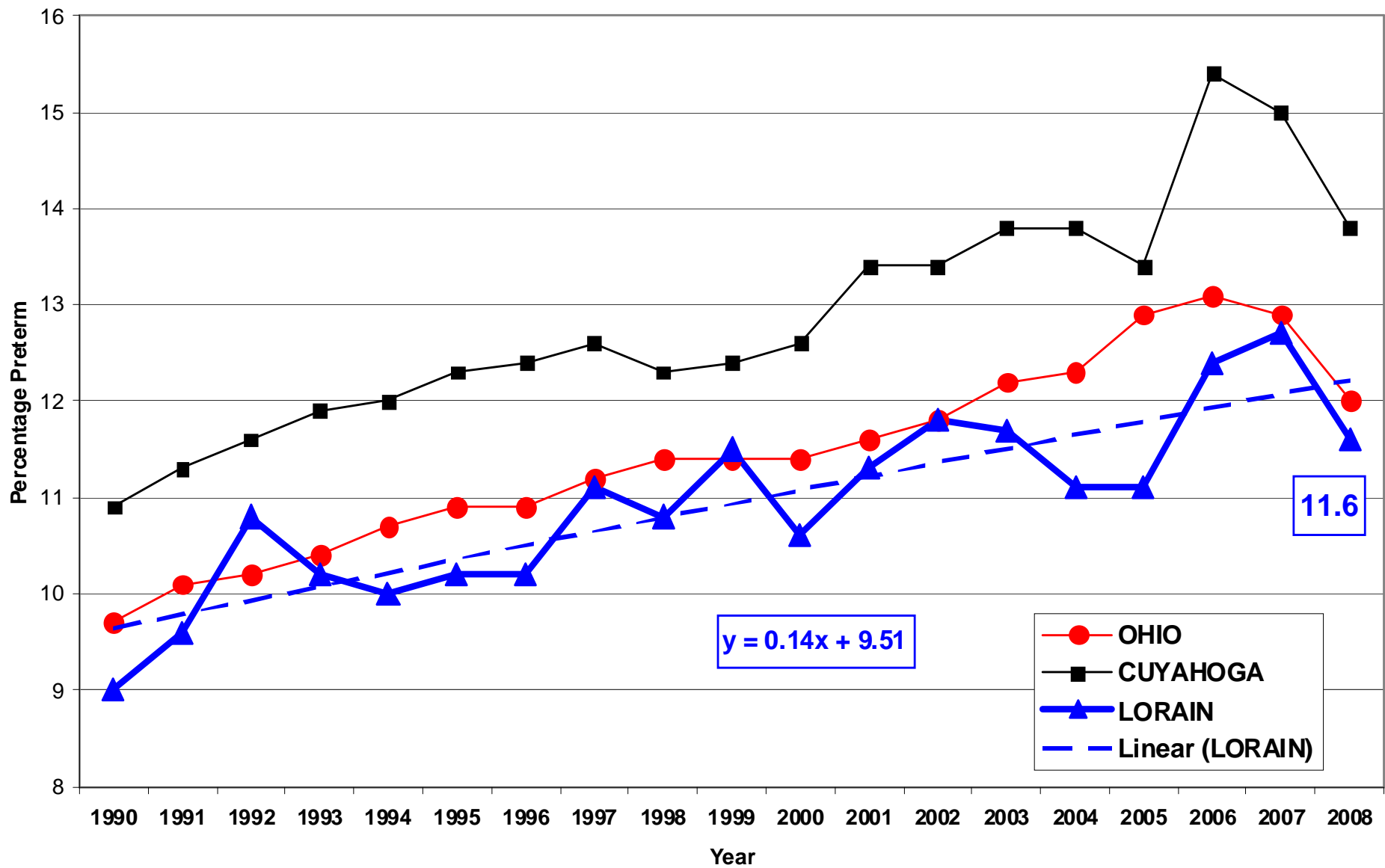
Very Low Birthweights (Less than 1500 grams)



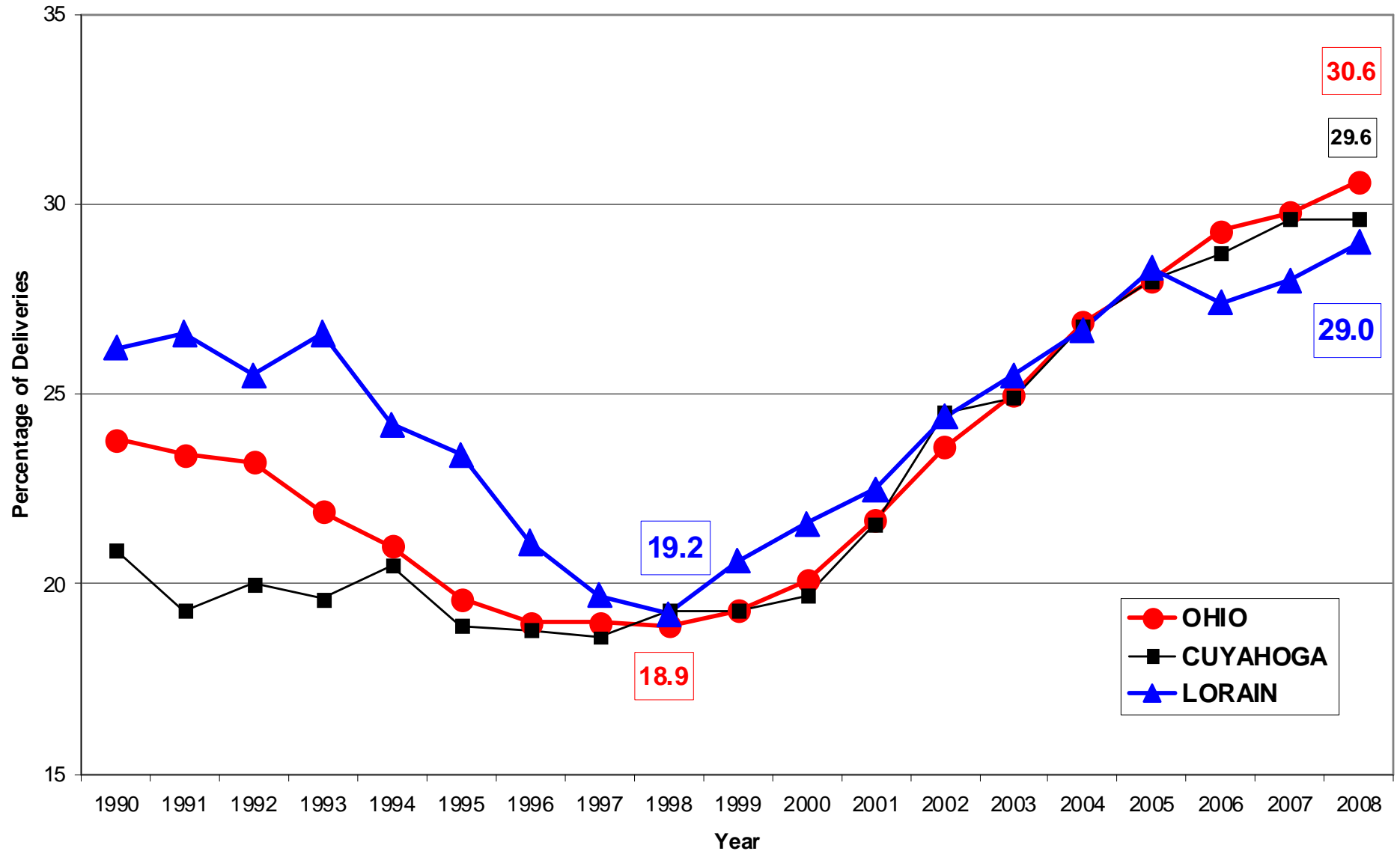
County of Birth Location -- Lorain County Residents 2000 to 2008



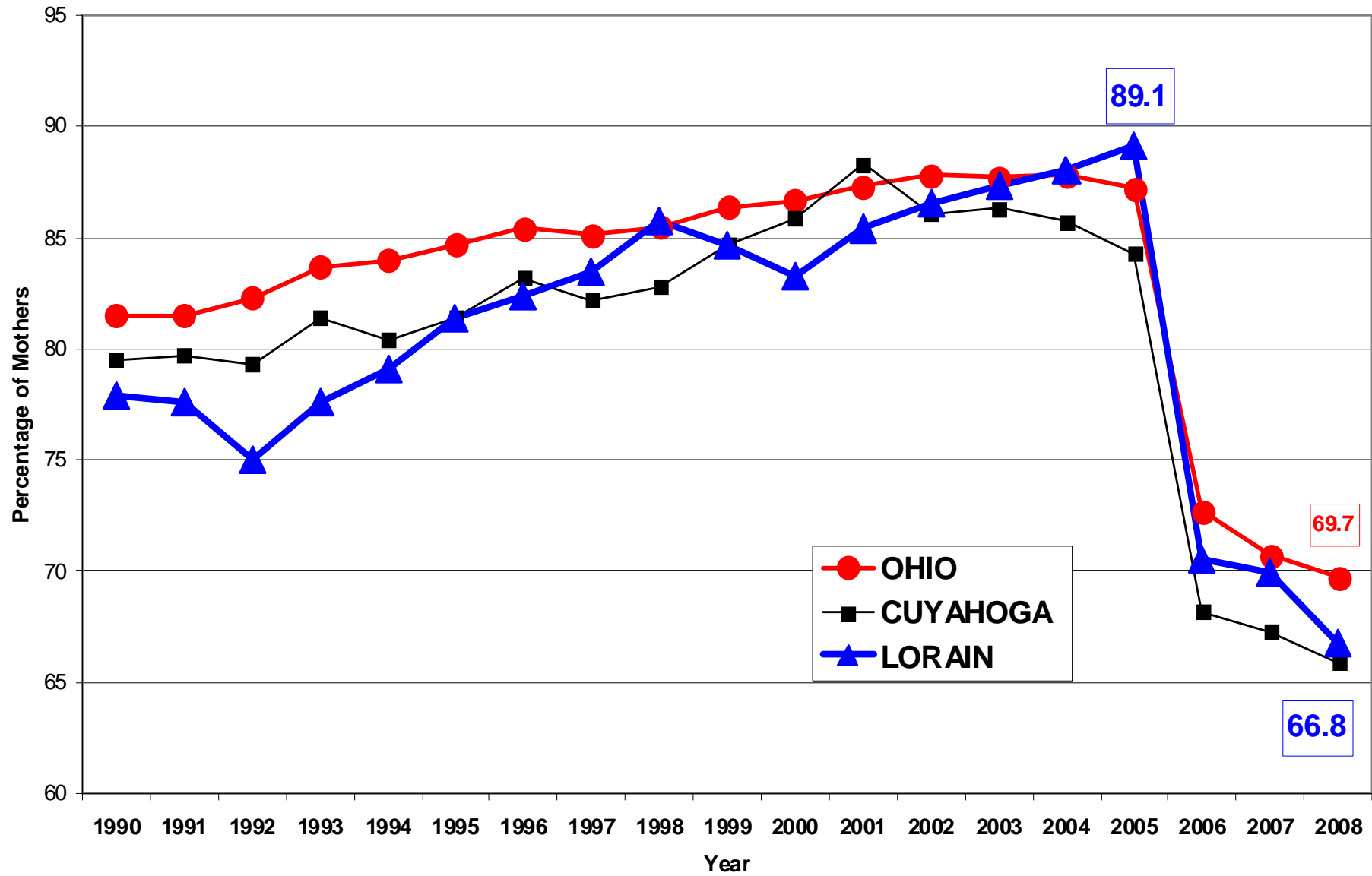
Premature Birth Rate 1990 to 2008



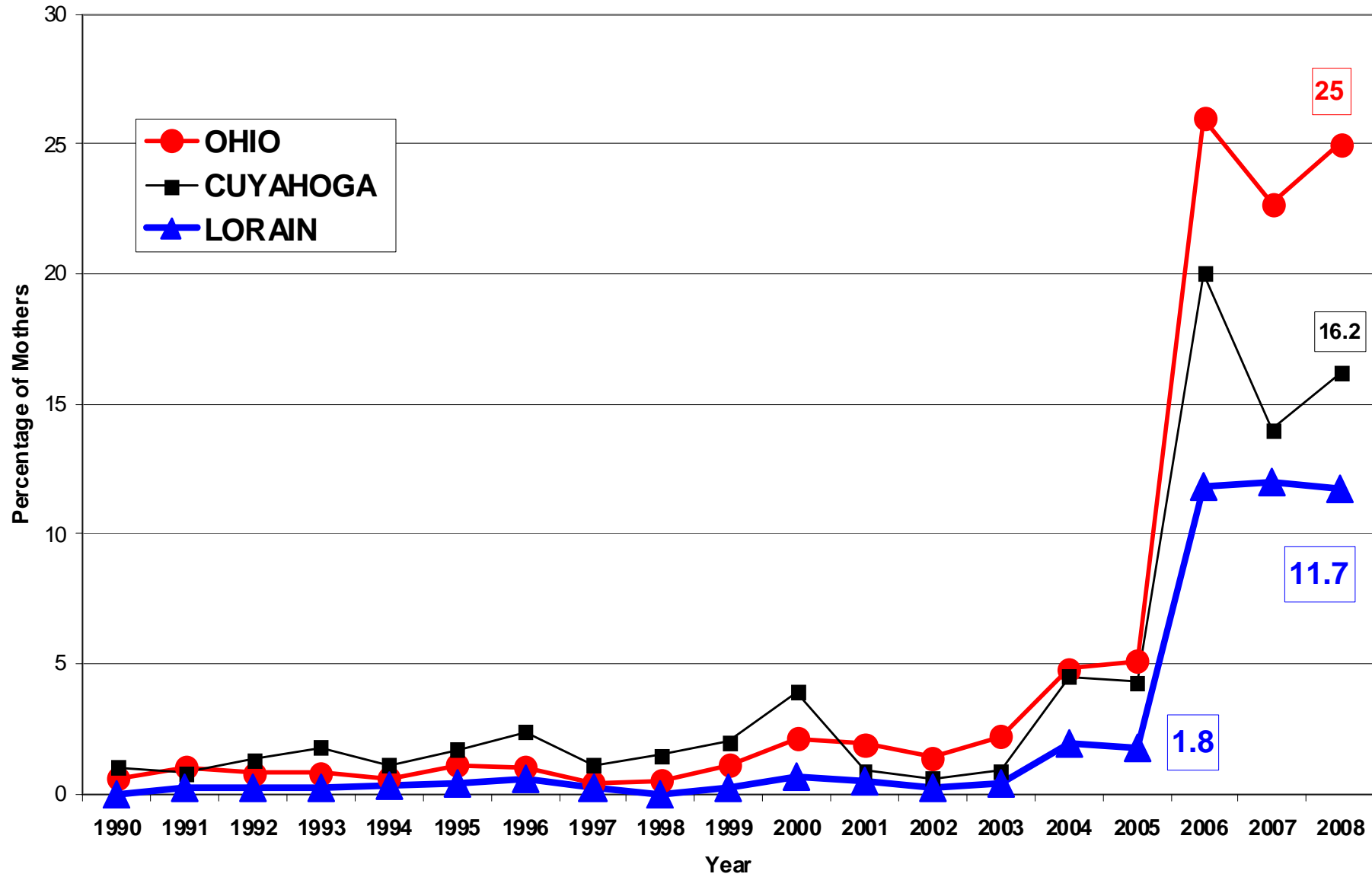
Percentage C-Section Births 1990 to 2008



First Trimester Entry into Prenatal Care 1990 to 2008



"Unknown" Entry into Prenatal Care 1990 to 2008



Prenatal Care Entry by Race / Hispanic Status 2008 Lorain County

| Race | First Trimester | “Unknown” | Hispanic Status | First Trimester | “Unknown” |
|--------------|------------------------|------------------|------------------------|------------------------|------------------|
| Black | 52.9% | 19.7% | Hispanic | 60.0% | 17.4% |
| White | 68.9% | 10.6% | Non- Hispanic | 67.7% | 11.0% |

Prenatal Care Entry by Age Group 2008

Lorain County

| | First Trimester | “Unknown” |
|---------|-----------------|-----------|
| LT 18 | 51.9 % | 23.0 % |
| 18 – 19 | 54.1 % | 13.7 % |
| 20 – 24 | 55.9 % | 15.0 % |
| 25 – 29 | 67.3 % | 12.2 % |
| 30 – 34 | 78.7 % | 7.3 % |
| 35 – 39 | 77.7 % | 7.8 % |
| 40 + | 66.1 % | 3.3 % |

Questions for Discussion and Follow-Up

1. Why do we experience unfavorable rates/ratios of infant mortality, low birthweight, preterm births, prenatal care entry?
2. Can demographic segmentation (age, race/ethnicity, other traits) help in understanding and addressing unfavorable conditions?
3. How much will improvement in data accuracy and timeliness improve our ability to respond?

PSI

